

# Guides, Brakes and Valves

Operating Instructions

*ORIGA SYSTEM PLUS*

Appendix to the Operating Instructions OSP-P / OSP-E

aerospace  
climate control  
electromechanical  
filtration  
fluid & gas handling  
hydraulics  
pneumatics  
process control  
sealing & shielding



ENGINEERING YOUR SUCCESS.

## Content

|   | Page      |
|---|-----------|
| <b>1 Foreword to the Operating Instructions</b> | <b>3</b>  |
| <b>2 Assembly Instructions</b>                  | <b>4</b>  |
| 2.1 Slideline .....                             | 4         |
| 2.2 Slideline with Brake .....                  | 5         |
| 2.3 Powerslide.....                             | 7         |
| 2.4 Guideline .....                             | 8         |
| 2.5 Proline.....                                | 10        |
| 2.6 Proline with Brake.....                     | 12        |
| 2.7 Guide OSP-KF .....                          | 14        |
| 2.8 OSP-Starline.....                           | 18        |
| 2.9 Heavy Duty.....                             | 21        |
| 2.10 Active Brake.....                          | 24        |
| 2.11 Multi-Brake-Slideline .....                | 25        |
| 2.12 Multi-Brake - Proline.....                 | 27        |
| 2.13 Integrated 3/2 Way Valves VOE.....         | 30        |
| <b>3 Replacement Parts</b>                      | <b>32</b> |
| 3.1 Slideline .....                             | 32        |
| 3.2 Slideline with Brake .....                  | 33        |
| 3.3 Powerslide.....                             | 35        |
| 3.4 Proline.....                                | 37        |
| 3.5 Proline with Brake.....                     | 38        |
| 3.6 Guide OSP-KF .....                          | 40        |
| 3.7 Starline .....                              | 41        |
| 3.8 OSP-Heavy Duty .....                        | 42        |
| 3.9 Active Brake.....                           | 43        |
| 3.10 Multi-Brake-Slideline .....                | 45        |
| 3.11 Multi-Brake-Proline .....                  | 47        |
| 3.12 Integrated 3/2 Way Valves VOE .....        | 49        |

## User's Responsibilities

The following is assumed to be the operator's/organisation's responsibility:

- compliance with EN 89/655 and the national applications
- compliance with the applicable national regulations for safety at work
- authorized use of OSP-P with its guides and brakes
- correct applications of these operating instructions.

**Commissioning of the OSP-P is forbidden until it has been established that the machine/plant in which it is to be installed complies with the requirements of the EC Machines Directives.**

## 1 Foreword to the Operating Instructions

This Appendix to the Operating Instructions is to be used only in conjunction with the Operating Instructions „OSP-P Pneumatic Linear Drive“ and „OSP-E Belt-Driven Linear Actor“

Please observe the Safety Notes carefully.

For the repair of the basic cylinder unit please see also the Operating Instructions „OSP-P Pneumatic Linear Drive or „OSP-E Belt-Driven Linear Actor“

The service life of the OSP cylinder and of its guides and brakes has been optimized by advanced material pairing and design which has been thought through to the smallest detail. However, excessive loads and difficult environmental conditions can reduce service life, therefore occasional careful maintenance work is recommended.

For technical data, permissible loads and calculation of service life of guides and brakes please see the Catalogue:

“ORIGA SYSTEM PLUS - Modular Pneumatic Linear Drive Systems“ or









“ORIGA SYSTEM PLUS - Modular Electric Linear Drive Systems“

All personnel who have anything to do with the OSP fitted with guides, brakes or valves must read and understand this Appendix to the Operating Instructions!

Keep for future use in conjunction with the Operating Instructions of the Linear Drive!

### Explanation of Symbols and Notes

Notes which are highlighted by these symbols help to prevent injury to personnel. Please ensure that all users understand them.

| Symbol  | Explanation of Symbol   | Symbol  | Explanation of Symbol                     |
|---|---|---|---|
|  | Attention: This symbol is used if failure to comply carefully with operating instructions, operating sequences, etc. can lead to personal injuries, fatal accidents or damage to the plant. |  | Attention: Danger of cuts to fingers etc. |
|  | Information: Symbol for tips and notes to facilitate use of machine and to help to prevent damage.  |  | Note: Wear safety glasses                 |
|  | Attention: Falling load   |  | Note: Wear safety gloves                  |
|  | Attention: Danger of crushing   |  | Note: Available accessory                 |

### Copyright

Copyright 2011 © **Parker-Hannifin GmbH** retains the copyright in these operating instructions.

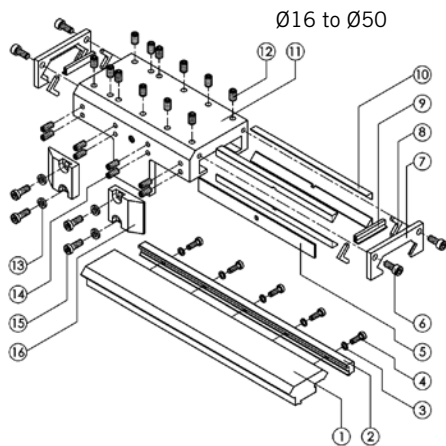
They must not be copied in full or in part, distributed or used in an unauthorized manner for competitive purposes or passed on to others. Contravention may lead to legal action.

## 2 Assembly Instructions

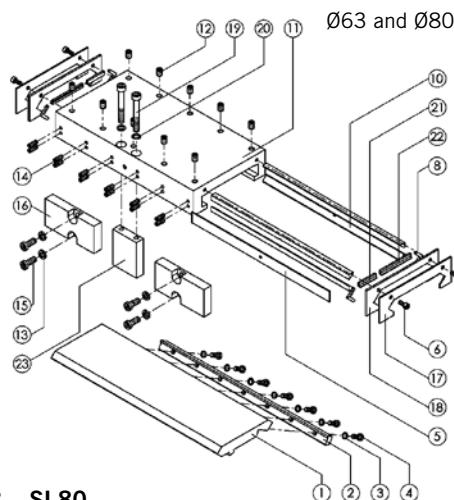
### 2.1 Slideline

#### (SL16 / SL25 / SL32 / SL40 / SL50 / SL63 / SL80)

For fitting and removal of the guide system the complete cylinder unit should be removed from the machine or plant.



SL16 – SL25 – SL32 – SL40 – SL50.....



SL63 – SL80

#### Dismantling of the Guide Carriage

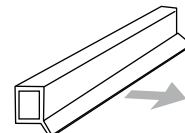
- Depressurise the cylinder and switch off all electrical power supply.
- Remove all parts mounted externally on the guide carriage (11).
- Unscrew one drive block (16) from piston of OSP, so that the guide carriage can be moved.
- For the OSP-P40, OSP-P50, OSP-E50, OSP-P63 and OSP-P80: only: unscrew one end cap from the cylinder.
- Loosen screws (6) on wiper cover (17).
- Slide the complete guide carriage off the guide rail.
- Unscrew wiper cover (7) (or 17+18 for SL63 and SL80) from both ends of the guide carriage (11).
- Inspect the parts – replace damaged or worn parts such as: wiper (9), slide profile (10) and felt (8) (service kit).

#### Dismantling and Reassembly of the Guide Rail

- To dismantle the guide rail (1) remove the screws (4) with their washers (3). Remove the guide rail (1) and clamping rail (2) from the cylinder profile.
- Clean all the parts.
- Centre the guide rail on the cylinder profile.
- Fit the clamping rail (2) to the guide rail (1) and screw in the screws (4) with their washers (3) (use the specified torque).

#### Reassembly of the Guide Carriage

- Clean all the parts.
- Grease the felts (8) with guide grease (Order No. 10550).
- Lay the wipers (9) or (21+22) and felts (8) in the wiper covers. The sealing lip of the wiper must be outwards (see drawing).
- Back off the adjusting screws (14) in the guide carriage.
- Lay in the support strip (5) on the same side as the adjusting screws.
- Place 2 slide profiles (10) per side in the guide carriage. The edges of the slide profiles in which grooves are cut (to allow grease from the grease nipples to get to the guide rail) must touch each other.
- Screw on the two wiper covers (7) or (17+18) loosely with the screws (6).



#### Remounting the Reassembled Guide Carriage on the Guide Rail

- Push the complete guide carriage assembly carefully onto the guide rail with the side with the adjusting screws towards the piston.
- If necessary move the felt wiper carefully into its correct position with a screwdriver.

### Adjustment of Play and Final Assembly

- Tighten the self-locking adjusting screws (14), individually from the middle working outwards, with the specified torque. If non-self-locking screws are used (14), use a locking medium (Loctite low-strength is recommended) and tighten the screws from the middle working outwards until the guide carriage can no longer be moved by hand.
- Tap the sides of the guide carriage (11) gently with a rubber hammer until the slide profiles (10) have settled into position and then tighten all the adjusting screws (14) again (see above).
- Loosen all the adjusting screws (14) about 1/4 to 1/2 turn individually from the middle working outwards. When correctly adjusted the guide carriage should be easily movable by hand but with no play.
- Tighten the screws (6) in the wiper cover (7) or (17+18) with the specified torque.
- Position the guide carriage centrally over the cylinder piston and secure the drive blocks (16) with the washers (13) and screws (15).

#### Note:

**The drive blocks (16) must be fitted against the guide carriage with no play (11) !!!**



#### Note the high torque required !!!

- Refit the end cap of the OSP if applicable.

### Lubrication

All unused threaded holes in the guide carriage (11) must be plugged with set screws (12) to prevent escape of lubricant. The grease nipples on both sides of the guide carriage (11) should be filled with guide grease (Order No. 10550) until a thin film of grease can be seen on the guide rail when the guide carriage is moved by hand.

### Torques for Screws

| Item | SL 16      | SL 25    | SL 32    | SL 40    | SL 50    | SL 63    | SL 80    |                            |
|------|------------|----------|----------|----------|----------|----------|----------|----------------------------|
| 4    | 3 Nm       | 3 Nm     | 3 Nm     | 10 Nm    | 10 Nm    | 10 Nm    | 10 Nm    |                            |
| 6    | 3 Nm       | 5.5 Nm   | 5.5 Nm   | 5.5 Nm   | 5.5 Nm   | 5.5 Nm   | 5.5 Nm   |                            |
| 14   | 0.3-0,6 Nm | 2.5-3 Nm | 2.5-3 Nm | 2.5-3 Nm | 2.5-3 Nm | 2.5-3 Nm | 2.5-3 Nm | (only self-locking screws) |
| 15   | 4.5 Nm     | 9 Nm     | 14.5 Nm  | 14.5 Nm  | 14.5 Nm  | 35 Nm    | 40 Nm    |                            |
| 19   | ---        | ---      | ---      | ---      | ---      | 20 Nm    | 20 Nm    |                            |

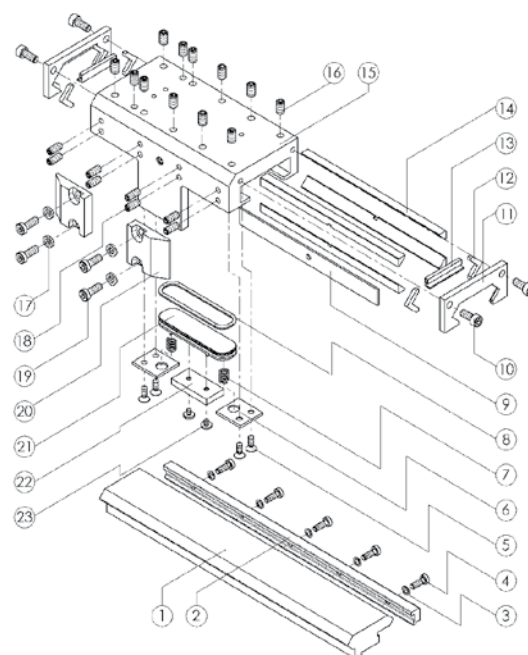
## 2.2 Slideline with Brake

### (SL25 / SL32 / SL40 / SL50)

For fitting and removal of the guide system the complete cylinder unit should be removed from the machine or plant.

### Dismantling of the Guide Carriage

- Depressurise the cylinder and brake lines and switch off all electrical power supply.
- Remove all parts mounted externally on the guide carriage (15).
- Unscrew drive block (20) from piston of OSP-P, so that the guide carriage can be moved.
- For the OSP-P40 and OSP-P50 only: unscrew one end cap of the cylinder.
- Loosen the screws (10) on the wiper cover (11).
- Slide the complete guide carriage off the guide rail.
- Unscrew the wiper cover (11) from both ends of the guide carriage (15).
- Inspect the parts – replace damaged or worn parts such as: wiper (13), slide profile (14) and felt (12) (service kit).



## Dismantling of the Brake

- Remove screws (5) and remove the plates (6) and springs (7) from the guide carriage.
- To remove the brake piston (21), apply compressed air to its air connection and blow it out (do not use sharp tools on the piston!).



### **Danger:**

**hold the brake piston while blowing it out!**

- Remove screws (23) and remove the brake lining (22) from the brake piston (21) and the O-ring (8).
- Inspect the parts – replace damaged or worn parts such as: O-ring (8) and brake lining (22).

## Dismantling and Reassembly of the Guide Rail

- Remove the screws (4) with their washers (3). Remove the guide rail (1) and clamping rail (2) from the cylinder profile.
- Clean all the parts.
- Centre the guide rail on the cylinder profile.
- Secure the guide rail (1) and clamping rail (2) with the screws (4) and their washers (3) (use the specified torque).

## Reassembly of the Brake

- Clean all the parts, the inside of the brake piston chamber and the brake air connection.
- Fit the brake lining (22) to the brake piston (21). Apply a locking medium (Loctite low-strength is recommended) to the screws (23) and tighten them.
- Grease the walls of the brake piston chamber and the groove in the brake piston lightly with guide grease (Order No. 10550).



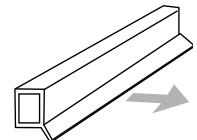
### **Note:**

**The brake lining must be grease-free.**

- Locate the O-ring (8) in the brake piston (21) and grease the O-ring lightly.
- Fit the brake piston (21) into the guide carriage (15).
- Fit the springs (7) and plates (6). Apply a locking medium to the screws (5) and tighten them.

## Reassembly of the Guide Carriage

- Clean all the parts.
- Grease the felts (12) with guide grease (Order No. 10550).
- Lay the wipers (13) and felts (12) in the wiper covers. The sealing lip of the wiper must be outwards (see drawing).
- Back off the adjusting screws (18) in the guide carriage.
- Lay in the support strip (9) on the same side as the adjusting screws.
- Place 2 slide profiles (14) per side in the guide carriage. The edges of the slide profiles in which grooves are cut (to allow grease from the grease nipples to get to the guide rail) must touch each other.
- Screw on the two wiper covers (11) loosely with the screws (10).



## Remounting the Reassembled Guide Carriage on the Guide Rail

- Push the complete guide carriage assembly carefully onto the guide rail with the side with the adjusting screws towards the piston.
- If necessary move the felt wiper carefully into its correct position with a screwdriver.

## Adjustment of Play

- Tighten the self-locking adjusting screws (18), individually from the middle working outwards, with the specified torque. If non-self-locking screws are used (18), use a screw locking system (Loctite low-strength is recommended) and tighten the screws from the middle working outwards until the guide carriage can no longer be moved by hand.
- Tap the sides of the guide carriage (15) gently with a rubber hammer until the slide profiles (14) have settled into position and then tighten all the adjusting screws (18) again (see above).
- Loosen all the adjusting screws (18) about 1/4 to 1/2 turn individually from the middle working outwards. When correctly adjusted the guide carriage should be easily movable by hand but with no play.
- Tighten the screws (10) in the wiper cover (11) with the prescribed torque.

### Lubrication

- All unused threaded holes in the guide carriage (15) must be plugged with set screws (16) to prevent escape of lubricant. The grease nipples on both sides of the guide carriage (15) should be filled with guide grease (Order No. 10550) until a thin film of grease can be seen on the guide rail when the guide carriage is moved by hand.

### Final Assembly

- Position the guide carriage centrally over the cylinder piston and secure the drive blocks (20) with the washers (17) and screws (19).

### Note:



**The drive blocks (20) must be fitted against the guide carriage with no play (15)  
!!! See the table for the correct torque !!!**

- Refit the end cap of the OSP-P, if applicable.

### Torques for Screws

| Pos. | SL 25                                    | SL 32      | SL 40      | SL 50      |
|------|--|------------|------------|------------|
| 4    | 3 Nm                                     | 3 Nm       | 10 Nm      | 10 Nm      |
| 5    | 3 Nm                                     | 3 Nm       | 3 Nm       | 3 Nm       |
| 10   | 5.5 Nm                                   | 5.5 Nm     | 5.5 Nm     | 5.5 Nm     |
| 18   | 2.5 - 3 Nm<br>(only self-locking screws) |            |            |            |
| 19   | 9 Nm                                     | 14.5 Nm    | 14.5 Nm    | 14.5 Nm    |
| 23   | 0.8 - 1 Nm                               | 0.8 - 1 Nm | 0.8 - 1 Nm | 0.8 - 1 Nm |

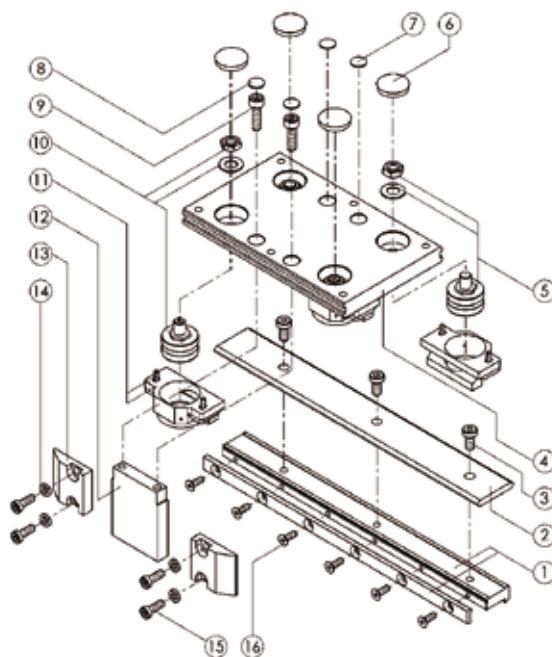
## 2.3 Powerslide

### PS16/25 – PS25/25 – PS25/35 – PS25/44 - PS32/35 – PS32/44 – PS40/44 – PS40/60 – PS50/60 – PS50/76

All the parts of the guide system mounted on the Powerslide are factory-adjusted and checked. Further adjustment is not necessary. If adjustment is required after some operating time, please follow these instructions.

### Adjustment of the Guide System

- Depressurise the cylinder air lines and switch off all electrical power supply.
- Remove all parts mounted externally on the guide carriage (4).
- Remove the drive block (13) from the piston of the OSP so that the guide carriage can be moved.
- For the OSP-P50 and OSP-E50 only : unscrew one end cap of the cylinder.
- Slide the complete guide carriage off the guide rail (2).
- Unscrew the cover (11) and slide the guide carriage back onto the guide rail.
- Remove the caps (6).
- Loosen the locknuts of the two eccentric rollers (10) with a box spanner. The eccentric roller (10), unlike the centric roller (5), has a hexagon socket in its axle.
- Turn the two eccentric rollers with an Allen key or spanner until there is no play. Only minimal force should be used. Tighten the nuts, taking care not to turn the eccentric rollers any further.





- Check the play on the guide: when the guide carriage is moved it should still be possible to hold the roller still with the fingers.
- Check the play at several points on the guide over the whole stroke as described above.
- Slide the complete guide carriage off the guide rail.
- Lubricate the cover (11)
- Fit the cover (11) with its screws and washers (do not tighten them yet).
- Slide the guide carriage back onto the guide rail, ensuring that the carrier is on the same side as the cylinder piston.
- Adjust the covers (11) so that there is light contact with the guide rail. This ensures reliable lubrication of the system in operation.



## Note:

**Too heavy a contact increases friction.**

- Position the guide carriage centrally over the piston of the cylinder and fit the drive blocks (13) with the washers (14) and screws (15).
- Fit the caps (6).



## Note:

**See the table for the correct torques !!!**

- The drive blocks (13) must be fitted against the carrier (12) with no play !!!
- Lubricate the cover (11) with a grease gun.



## Note:

**Too heavy pressure of the rollers on the guide rail should be avoided at all times, as this shortens the service life of the guide.**

- Refit the end cap of the OSP, if applicable.

## Torques for Screws

| Item | PS 16/25 | PS 25/25 | PS 25/35 | PS 25/44 | PS 32/35 | PS 32/44 | PS 40/44 | PS 40/60 | PS 50/60 | PS 50/76 |
|------|----------|----------|----------|----------|----------|----------|----------|----------|----------|----------|
| 3    | 10 Nm    | 10 Nm    | 10 Nm    | 10 Nm    | 10 Nm    | 10 Nm    | 10 Nm    | 20 Nm    | 20 Nm    | 20 Nm    |
| 5    | 13 Nm    | 13 Nm    | 13 Nm    | 25 Nm    | 13 Nm    | 25 Nm    | 25 Nm    | 25 Nm    | 25 Nm    | 70 Nm    |
| 9    | 3 Nm     | 10 Nm    | 10 Nm    | 10 Nm    | 10 Nm    | 10 Nm    | 10 Nm    | 10 Nm    | 20 Nm    | 20 Nm    |
| 15   | 4,5 Nm   | 9 Nm     | 9 Nm     | 9 Nm     | 14,5 Nm  | 14,5 Nm  | 14,5 Nm  | 14,5 Nm  | 14,5 Nm  | 14,5 Nm  |
| 16   | 2,6 Nm   | 2,6 Nm   | 3 Nm     | 3 Nm     | 3 Nm     | 3 Nm     | 5,5 Nm   | 10 Nm    | 10 Nm    | 10 Nm    |

## 2.4 Guideline

(GDL25 / GDL32 / GDL40 / GDL50)

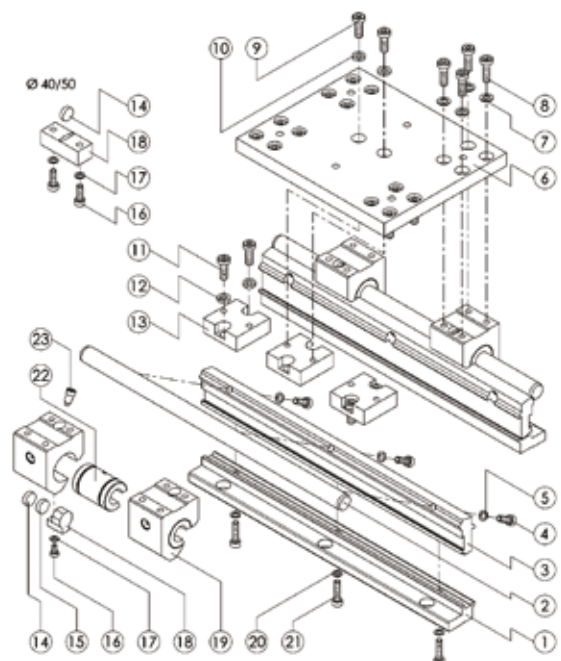
### Fitting the Guide

Clean the bearing surfaces for the guide. The accuracy of the guide depends on the accuracy of the bearing surfaces, which should therefore be as flat, parallel and undamaged as possible.

- Place the guide unit on the substructure and secure it lightly with screws to DIN912-8.8.
- If applicable, fit the clamping rail (1) and line it up correctly.
- Tighten the screws with the following torques:

**GDL 25 /GDL 32: M5 - 5,5 Nm**

**GDL 40 /GDL 50: M6 - 10 Nm**





## Maintenance

If the ball bushings are damaged by overloads or worn out, we recommend replacement of both the ball bushings (22) and the guide shafts (2) at the same time.

Use only genuine Parker Origa replacement parts to ensure that the load values specified in the catalogue can be achieved again.

## Dismantling of the Guide Carriage

- Depressurise the cylinder air lines and switch off all electrical power supply.
- Remove all parts mounted externally on the guide carriage plate (6).
- Loosen and remove the screws (9) with their washers (10).
- For the GDL50 only: Remove one end cap of the OSP.
- Slide the complete guide carriage off the guide shafts.
- Loosen and remove the screws (8) with their washers (7) to separate the guide carriage plate (6) from the ball bushing housings (19).
- Unscrew the set screw (23) from the ball bushing housing (19) and remove the ball bushing (22).

## Dismantling of the Guide Rail

- Unscrew the guide rail from the bearing surface.
- Remove the screws (21) and washers (20) and take the clamping rail (1) and mounting rail (3) off the OSP cylinder.
- Unscrew the screws (4) with their washers (5) and remove the guide shaft (2) from the mounting rail (3).

## Reassembly of the Guide Rail

- Inspect the guide shafts (2) and replace them if necessary.
- Clean all the parts.
- Secure the guide shaft (2) on the mounting rail (3) with the screws (4) and washers (5). Use only chamfered guide shafts.
- Fit the mounting rail (3) and clamping rail (1) onto the OSP cylinder with the screws (21) and washers (20), centring the rails on the cylinder profile.

## Reassembly of the Guide Carriage

- Inspect the ball bushings and replace damaged or worn ones.
- Clean all the parts.
- Install the ball bushing (22) in the ball bushing housing (19) and secure it with the set screw (23), applying a locking medium to the screw (Loctite low-strength is recommended).
- Slide the individual ball bushing housings (19) onto the guide shaft.

**Take care not to tilt them!!**



### Note:

**Never slide the completely assembled guide carriage onto the rail, as this could damage the ball bushings!!!**

- Position the guide carriage plate (6) on the ball bushing housings (19) and secure it with the screws (8) and washers (7) using the specified torque.
- Centre the guide carriage over the piston of the cylinder and secure the middle drive block (13) with the washers (10) and screws (9).



### Note:

**See the correct torque in the table !!!**

**The three drive blocks (13) must be mounted together with no play !!!**

- Refit the end cap of the OSP cylinder, if applicable.

## Position of the Sensor

- The magnet housing (18) can be mounted on any one of the four ball bushing housings (19).
- The sensor must then be positioned accordingly.

## Lubrication



### Information

- Use only roller bearing grease for the ball bushings.
- Grease nipples are provided on the four ball bushing housings (19) for easy lubrication.
- Lubricate the ball bushings at regular intervals, depending on your application, so that there is always enough grease in the ball bushings.

### Torques for Screws

| Item | GDL 25 | GDL 32  | GDL 40  | GDL 50  |
|------|--------|---------|---------|---------|
| 4    | 3 Nm   | 3 Nm    | 5,5 Nm  | 5,5 Nm  |
| 8    | 5,5 Nm | 5,5 Nm  | 10 Nm   | 10 Nm   |
| 9    | 9 Nm   | 10 Nm   | 14,5 Nm | 10 Nm   |
| 11   | 9 Nm   | 14,5 Nm | 14,5 Nm | 14,5 Nm |
| 16   | 1,2 Nm | 1,2 Nm  | 3 Nm    | 3 Nm    |
| 21   | 3 Nm   | 3 Nm    | 10 Nm   | 10 Nm   |

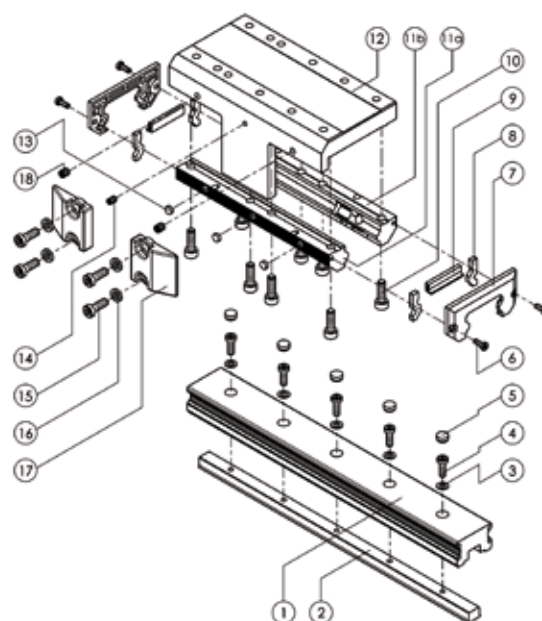
## 2.5 Proline

### (PL16 / PL25 / PL32 / PL40 / PL50)

For fitting and removal of the guide system the complete cylinder unit should be removed from the machine or plant.

#### Dismantling of the Guide Carriage

- Depressurise the cylinder lines and switch off all electrical power supply.
- Remove all parts mounted externally on the guide carriage (12).
- Unscrew drive block (17) from the piston of the OSP, so that the guide carriage can be moved.
- Loosen the screws (6) in the wiper cover (7).
- For the PL40 / PL50 only: remove one end cap from the OSP cylinder.
- Slide the complete guide carriage off the double rail (1).
- Remove the wiper covers (7) with the felts (8) and wipers (9) from both ends of the guide carriage (12).
- Loosen and remove the screws (10) and separate the pair of roller shoes (11) from the guide carriage (12).

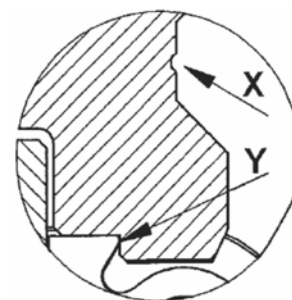


#### Dismantling of the Double Rail

- Remove the cap plugs (5).
- Remove the screws (4) and washers (3) and take the double rail (1) off the OSP cylinder.
- If necessary: remove the end caps of the OSP cylinder and push the clamping profile out of the slot in the cylinder profile.

### Reassembly of the Double Rail

- Inspect the double rail (1) and replace it if necessary.
- Clean all the parts.
- If necessary: remove the end caps of the OSP cylinder and push the clamping profile into the slot in the cylinder profile.
- Fit the double rail (1) and clamping profile (2) to the OSP cylinder with the screws (4) and washers (3) (note the maximum torque), centring the rails on the cylinder profile. The groove (X) on the side of the double rail (1) must be on the piston side. The bearing surface (Y) of the double rail (1), which is on the same side as the groove (X), must be positioned against the dovetail profile of the OSP cylinder profile.
- Insert new cap plugs (5) flush with or slightly below the surface of the double rail (1).



### Reassembly of the Guide Carriage

- Inspect the components: the pair of roller shoes (11), wiper (9) and felt (8) and replace any damaged or worn
- Clean all the parts.
- For adjustment of the roller shoes there is a fixed side and an adjustment side. The roller shoe on the fixed side (11b) is secured firmly to the underside of the guide carriage (12) with the screws (10).
- Place the three washer (13) in the roller shoe (11a) on the adjustment side and fit it against the guide carriage (12) with the screws (10). Tighten the screws (10) until the roller shoe lies fully on the guide carriage but can still be moved.
- Slide the complete guide carriage carefully onto the guide rail with the side with the adjusting screw (14) towards the piston of the OSP.
- Adjust the roller shoes (11) with the set screw (14). The roller shoes must be adjusted in the unloaded condition and there should be no play at the loosest point on the double rail (1). At the tightest point on the double rail the resistance to movement must not exceed the maximum value. The correct and maximum resistance to movement are as follows:

| Size      | PL 16 | PL 25 | PL 32 | PL 40 | PL 50 |
|-----------|-------|-------|-------|-------|-------|
| Correct ≤ | 0,5 N | 1 N   | 1,5 N | 2 N   | 3 N   |
| Maximum ≤ | 3 N   | 6 N   | 9 N   | 10 N  | 12 N  |

- First tighten the screws (10) with the specified torque and afterwards tighten the both set screws(18) with the specified torque.
- Fit the wiper covers (7), felts (8) and wipers (9) with the screws (6).
- Position the guide carriage (12) centrally over the piston of the cylinder and secure the drive blocks (17) with the washers (16) and screws (15).



#### Note:

**The drive blocks (17) must be fitted against the guide carriage (12) with no play !!! See the correct torque in the table !!!**

- Refit the end caps of the OSP, if applicable.

### Lubrication

The Proline roller guide is lifetime-lubricated.

### Torques for Screws

| Item      | PL 16  | PL 25  | PL 32   | PL 40   | PL 50   |
|-----------|--------|--------|---------|---------|---------|
| (OSP-P) 4 | 3 Nm   | 3 Nm   | 10 Nm   | 10 Nm   | 10 Nm   |
| (OSP-E) 4 | ---    | 1 Nm   | 7 Nm    | ---     | 10 Nm   |
| 6         | 1,2 Nm | 1,2 Nm | 1,2 Nm  | 1,2 Nm  | 1,2 Nm  |
| 10        | 3 Nm   | 5,5 Nm | 10 Nm   | 10 Nm   | 20 Nm   |
| 15        | 4,5 Nm | 9 Nm   | 14,5 Nm | 14,5 Nm | 14,5 Nm |
| 18        | 0,5 Nm | 0,5 Nm | 0,5 Nm  | 0,5 Nm  | 0,5 Nm  |

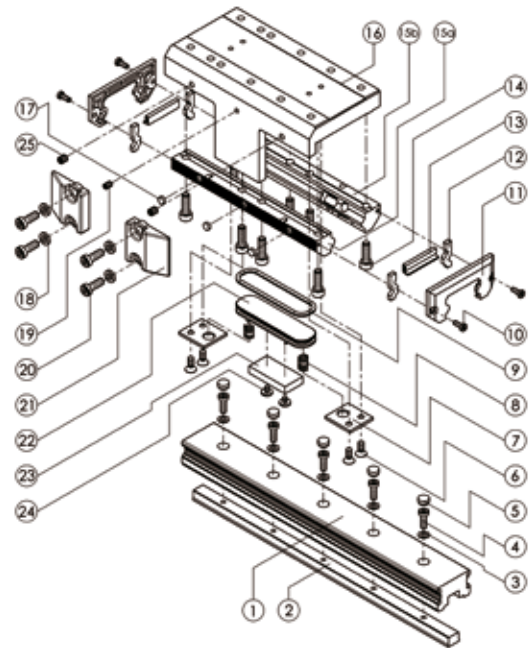
## 2.6 Proline with Brake

### (PL25 / PL32 / PL40 / PL50)

For fitting and removal of the guide system the complete cylinder unit should be removed from the machine or plant.

#### Dismantling of the Guide Carriage

- Depressurise the cylinder lines and switch off all electrical power supply.
- Remove all parts mounted externally on the guide carriage (16).
- Unscrew drive block (20) from piston of OSP-P so that the guide carriage can be moved.
- Loosen screws (10) in wiper cover (11).
- For PL40 / PL50 only: remove one end cap of the OSP.
- Slide the complete guide carriage off the double rail (1).
- Remove the wiper covers (11) with felts (12) and wipers (13) from both ends of the guide carriage (16).
- Loosen and remove the screws (14) and separate the pair of roller shoes (15) from the guide carriage (16).



#### Dismantling of the Brake

- Remove the screws (6) and remove the plates (7) and springs (8) from the guide carriage.
- To remove the brake piston (22), apply compressed air to its air connection and blow it out (do not use sharp tools on the piston!).



#### **Danger:**

**hold the brake piston while blowing it out!**

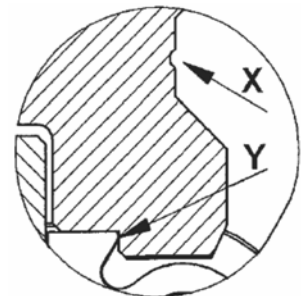
- Remove the screws (24) and remove the brake lining (23) and O-ring (9) from the brake piston (22).
- Inspect the parts – replace any damaged or worn parts, e.g. the O-ring (9) and the brake lining (23).

#### Dismantling of the Double Rail

- Remove the cap plugs (5).
- Remove the screws (4) and washers (3) and take the double rail (1) off the OSP cylinder.
- If necessary: remove the end caps of the OSP cylinder and take the clamping profile out of the slot in the cylinder profile.

#### Reassembly of the Double Rail

- Inspect the double rail (1) and replace it if necessary.
- Clean all the parts.
- If necessary: remove the end caps of the OSP cylinder and push the clamping profile into the slot in the cylinder profile.
- Fit the double rail (1) and clamping profile (2) to the OSP cylinder with the screws (4) and washers (3) (note the maximum torque), centring the rails on the cylinder profile.  
The groove (X) on the side of the double rail (1) must be on the piston side. The bearing surface (Y) of the double rail (1), which is on the same side as the groove (X), must be positioned against the dovetail profile of the OSP cylinder profile.
- Insert new cap plugs (5) flush with or slightly below the surface of the double rail (1).



### Reassembly of the Brake

- Clean all the parts, the inside of the brake piston chamber and the brake air connection.

#### Note:



**The brake lining must be grease-free.**

- Locate the O-ring (9) in the brake piston (22) and grease the O-ring lightly.
- Fit the brake piston (22) into the guide carriage (16).
- Fit the springs (8) and plates (7). Apply a locking medium to the screws (6) and tighten them.

### Reassembly of the Guide Carriage

- Inspect the components: the pair of roller shoes (15), wiper (13) and felt (12) and replace any damaged or worn parts.
- Clean all the parts.
- For adjustment of the roller shoes there is a fixed side and an adjustment side. The roller shoe on the fixed side (15b) is secured firmly to the underside of the guide carriage (16) with the screws (14).
- Place the three washers (17) in the roller shoe (15a) on the adjustment side and fit it against the guide carriage (16) with the screws (14). Tighten the screws (14) until the roller shoe lies fully on the guide carriage but can still be moved.
- Slide the complete guide carriage carefully onto the guide rail with the side with the adjusting screw (19) towards the piston of the OSP.
- the roller shoes (15) with the set screw (19). The roller shoes must be adjusted in the unloaded condition and there should be no play at the loosest point on the double rail (1). At the tightest point on the double rail the resistance to movement must not exceed the maximum value.

The correct and maximum resistance to movement are as follows:

| Size      | PL 25 | PL 32 | PL 40 | PL 50 |
|-----------|-------|-------|-------|-------|
| Correct ≤ | 1 N   | 1,5 N | 2 N   | 3 N   |
| Maximum ≤ | 6 N   | 9 N   | 10 N  | 12 N  |

- First tighten the screws (14) with the specified torque and afterwards tighten the both set screws(25) with the specified torque.
- Fit the wiper covers (11), felts (12) and wipers (13) with the screws (10).
- Position the guide carriage (16) centrally over the piston of the cylinder and secure the drive blocks (21) with the washers (18) and screws (20).



#### Note:

**The drive blocks (21) must be fitted against the guide carriage (16) with no play !!! See the correct torque in the table !!!**

- Refit the end caps of the OSP-P, if applicable.

### Lubrication

The Proline roller guide is lifetime-lubricated.

### Torques for Screws

| Item | PL 25    | PL 32    | PL 40    | PL 50    |
|------|----------|----------|----------|----------|
| 4    | 3 Nm     | 10 Nm    | 10 Nm    | 10 Nm    |
| 6    | 3 Nm     | 3 Nm     | 3 Nm     | 3 Nm     |
| 10   | 1,2 Nm   | 1,2 Nm   | 1,2 Nm   | 1,2 Nm   |
| 14   | 5,5 Nm   | 10 Nm    | 10 Nm    | 20 Nm    |
| 20   | 9 Nm     | 14,5 Nm  | 14,5 Nm  | 14,5 Nm  |
| 24   | 0,8-1 Nm | 0,8-1 Nm | 0,8-1 Nm | 0,8-1 Nm |
| 25   | 0,5 Nm   | 0,5 Nm   | 0,5 Nm   | 0,5 Nm   |

## 2.7 Guide OSP-KF

### 2.7.1 Dismantling of the Guide

For fitting and removal of the guide system the complete cylinder unit should be removed from the machine or plant.

For the disassembly of the cylinder (of the drive itself) please refer to the operating instructions OSP-P.

- **Note the position of the parts on the exploded view drawing**

#### Preparation:

- Depressurise the cylinder air lines. Make sure that the cylinder is completely depressurised.
- Switch off all electrical power supply.
- Remove all parts mounted externally on the guide carriage plate.
- Carefully remove the guided cylinder without bending it.

#### Dismantling of the Guide Carriage

- Unscrew one off drive block (3) from the piston OSP-P.

#### Risk of jamming!

**Watch out for balls falling out (may occur due to wear).**

- Carefully slide off the guide carriage from the guide rail (5), **avoid jamming!**
- **Clean the components** using customary cleansing agents. Use lint-free cloths only.
- Generally check all parts for wear:
  - guide carriage (9) for damages, thread.
  - carrier „STAR“ (8) balls (heavy operation, check for damage).
  - guide rail „STAR special rail“ (5) for grooves, chatter marks.
  - clamping profile (4) for damages, thread.
- Replace components if necessary.

#### Dismantling of the Carrier (8)

- To dismantle the carriers (8), loosen the screws (10).

#### Dismantling of the Guide Rail (5)

In the case of visible wear in the form of grooves and/or chatter marks the guide rail must be replaced. It is not possible regrind to repair the guide rail.

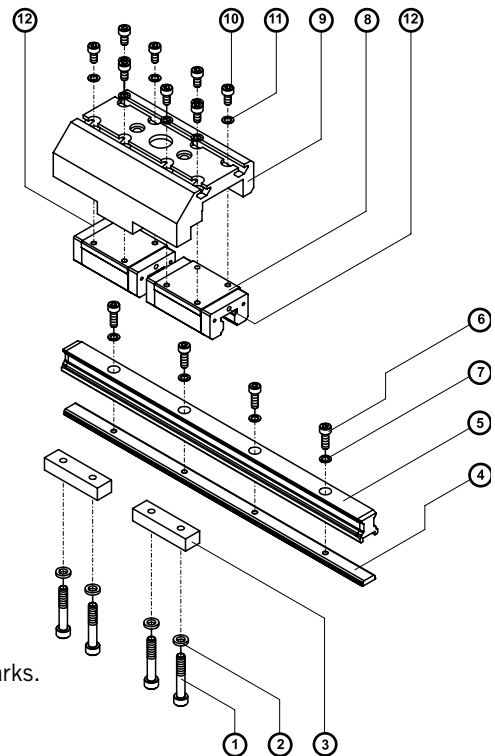
- To disassemble the guide rail (5) loosen screws (6). Remove guide rail from the cylinder barrel.

#### Dismantling the Clamping Profile (4)

The following steps are normally only necessary if the complete guide is to be dismantled for ever, or if a full cleaning is required.

To dismantle the clamping profile (4), one of the endcap (35, 36) of the OSP cylinder must be removed. Please follow the instructions in the operating instructions OSP-P.

- Loosen the sealing bands, unscrew the endcap screws (4) off and remove endcap.
- Slide the clamping profile off the dovetail groove of the cylinder barrel.



## 2.7.2 Reassembly of the Guide

Prior to reassembly, the components have to be checked for wear and the required spare parts have to be provided.

### Fixing of the Clamping Profile (4)

Only necessary if the guide is completely dismantled or **retrofitted**.

To fit the clamping profile (4) remove one of the endcaps (35, 36).

- Slide clamping profile (4) into the lateral groove of the cylinder barrel.
- Fit endcaps (35, 36) of the OSP cylinder.  
For proper procedure refer to operating instructions OSP-P.

### Fitting of the Guide Rail (5)

Depending on the size of the cylinder washers (7) must be used when fixing the guide rail: **washers must be used for KSP-KF16 / -KF40 / -KF50!**

- Slightly fix the guide rail (5) including all screws (6) and washers (7) where required. align.
- Tighten all screws using a torque wrench in accordance with table.

| Screw Item | OSP KF-16 | OSP KF-25 | OSP KF-32 | OSPKF-40 | OSP KF-50 |
|------------|-----------|-----------|-----------|----------|-----------|
| 6          | 1,2 Nm    | 3 Nm      | 3 Nm      | 5,5 Nm   | 10Nm      |

### Mounting of Carrier (8)



#### Note:

**Risk of damage due to jamming, ball loss and dirt.**

**The front side of the guide rail must have the required chamfer and must not show any damages, burr etc.**

Do not use force. Use enclosed mounting aid for new components as mentioned in the STAR description.

- Grease front side of the guide rail with the anti-friction bearing grease prescribed for the guide.
- Align the carrier **with the grinded datum face pointing towards the piston yoke** of the OSP cylinder. (with OSP-KF 16 both sides are equal).
- Align both carriers using the mounting aid (if available) and carefully slide onto the rail without jamming it.



#### Important:

To avoid loosing the balls, the balls are secured with fine, but sensible wires. The balls won't fall out if handled properly.

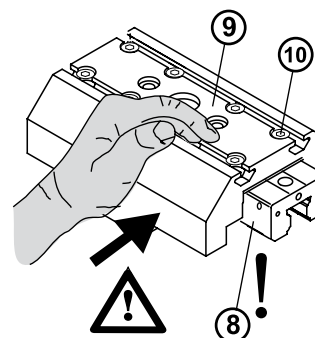


## Mounting the Guide Carriage (9)

Depending on the cylinder washers must be used:  
for **OSP-KF16 / -KF32 / -KF40 / -KF50** use **washers (11)**.

The carrier at the guide carriage (9) must be positioned on the side of the piston yoke of the OSP cylinder.

- Loosely fix the guide carriage (9) with all screws (10) and washers (11) on the carriage.
- Press guide carriage (9) **against the grinded side of the carrier (8)**
- and tighten all screws (10) in accordance with the table using a torque wrench.



### Note:

The datum faces of the carriers must fit close to the guide carriage!



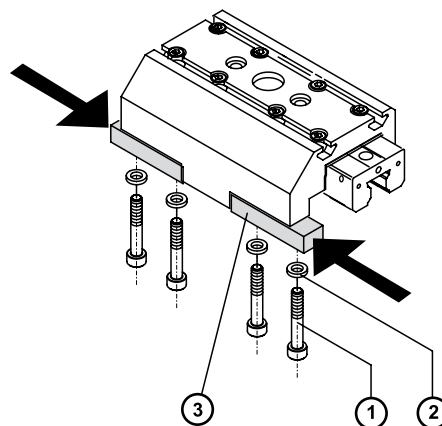
| Screw Item | OSP KF-16 | OSP KF-25 | OSP KF-32 | OSP KF-40 | OSP KF-50 |
|------------|-----------|-----------|-----------|-----------|-----------|
| 10         | 1,2 Nm    | 3 Nm      | 3 Nm      | 5,5 Nm    | 10 Nm     |



### Important:

The driveblocks (3) must be fixed to the carrier of the guide carriage (9) without any backlash!

- Strongly press the driveblocks (3) to the piston yoke of the OSP cylinder together with the screws (1) and the washers (2) and screw down alternately.



| Screw Item | OSP KF-16 | OSP KF-25 | OSP KF-32 | OSP KF-40 | OSP KF-50 |
|------------|-----------|-----------|-----------|-----------|-----------|
| 1          | 3 Nm      | 5,5 Nm    | 10 Nm     | 10 Nm     | 10 Nm     |

See the correct torque in the table !!!



### Information:

Assembly of OSP-KF into a machine or plant refers in principle to the OSP-cylinder.  
For more informations please refer to the operating instructions OSP-P.

## Lubrication

There are grease nipples at the front of the carriers (8) for re-lubrication.

The re-lubrication intervals depend on the environmental influences such as dirt, vibrations, impact load etc.

Determine the lubrication intervals in accordance with your individual case of application use ensuring that there is always enough grease in the carriers. Make sure that there is always a grease film on the visible on the running surfaces of the guide rail.

We recommend to use a grease in accordance with DIN 51825 with the consistency class NLGI 2 in accordance with DIN 51818.

Lubricants with solids contents (such as Grafit or MoS<sub>2</sub>) must not be used.



**New carriers for KF16 and OSP-KF40 must be lubricated prior to commissioning since these components are only preserved.**

The initial lubrication is made in accordance with the below table using three times the subset:

1. grease carrier with the first subset in accordance with the table.
2. slide the carrier with 3 up and down strokes by at least three times the carrier length.
3. repeat the procedures following 1. and 2. two times.
4. check whether a grease film is visible on the guide rail.

**Table amount of grease OSP-KF**

| Type  | Subset for          | cm <sup>3</sup> |
|-------|---------------------|-----------------|
| -KF16 | initial lubrication | 3 x 0,4         |
|       | re-lubrication      | 1 x 0,4         |
| -KF25 | re-lubrication      | 1 x 0,7         |
| -KF32 | re-lubrication      | 1 x 0,7         |
| -KF40 | re-lubrication      | 1 x 0,7         |
| -KF50 | re-lubrication      | 1 x 1,4         |

## Maintenance

Dirt may collect on the exposed guide rails.

To maintain the function of the sealings in the carriers, remove such dirt deposits at regular intervals.

In the case of deviations from our standards or critical applications please refer to our engineering department.

## 2.8 OSP-Starline

### 2.8.1 Dismantling the complete Guide Carriage

For fitting and removal of the guide system the complete cylinder unit should be removed from the machine or plant.

- **Note the position of the parts on the exploded view drawing**

#### Preparation:

- Depressurise the cylinder air lines. Make sure that the cylinder is completely depressurised.
- Switch off all electrical power supply.
- Remove all parts mounted externally on the guide carriage plate.
- Carefully remove the guided cylinder without bending it.

#### Dismantling of the Guide Carriage (9):

- Unscrew one drive block (3) from the piston of the OSP-P.
- Carefully slide the complete guide carriage (9) from the guide rail.
- Check guide carriage (9), carrier (8), guide rail (5) and clamping profile (4) for damages and wear and replace if necessary.

#### Dismantling the Carrier (8)

- Remove screws (10) from the guide carriage.

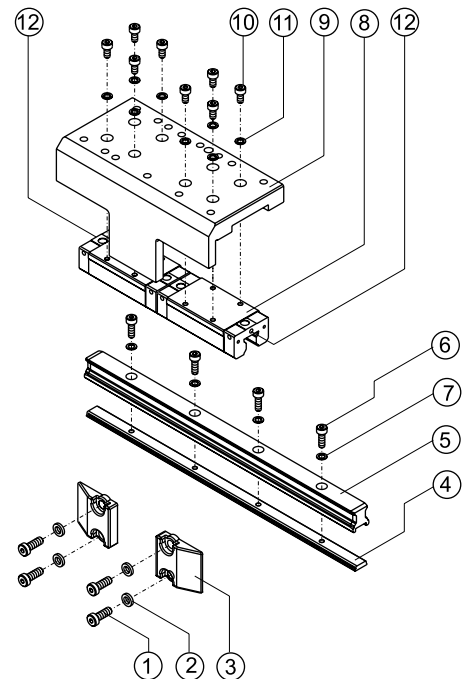
#### Dismantling the Guide Rail (5)

- Remove screws (6) from the guide carriage.
- Remove guide rail (5) from the cylinder barrel.

#### Dismantling the Clamping Profile (4)

To dismantle the clamping profile (4) remove one of the endcaps of the OSP-P cylinder.

- Refer to the operating instructions OSP-P (part 35).
- Slide the clamping profile (4) out of the groove of the cylinder barrel.



### 2.8.2 Mounting the complete Guide Carriage

#### Mounting of the Clamping Profile (4)

To mount the clamping profile (4) remove one of the endcaps of the OSP-P cylinder.

- Refer to the operating instructions OSP-P (part 35).
- Slide clamping profile (4) into the groove of the cylinder barrel.  
**Mind position at the cylinder barrel!**
- Fix cover (35) of the OSP cylinder. For procedure see operating instructions OSP-P.

#### Mounting of the Guide Rail (5)

- Provide guide rail (5) with all screws (6).

#### Note:

Different washers due to different screw penetration:

OSP-SLT16, OSP-SLT40 and OSP-SLT50 with washers (7), other cylinder sizes without washers.

- Loosely fix screws, align.
- Tighten screws (6) in accordance with the torque table:

| Item | OSP-STL16 | OSP-STL25 | OSP-STL32 | OSP-STL40 | OSP-STL50 |
|------|-----------|-----------|-----------|-----------|-----------|
| 6    | 1.2 Nm    | 3 Nm      | 3 Nm      | 5.5 Nm    | 10 Nm     |



### Mounting of the carriers (8):

- Carefully slide both carriers (8) onto the guide rail (5).  
For new carriers use enclosed mounting aid and carefully slide onto the guide rail (5).  
Refer to the enclosed instructions.



#### Note:

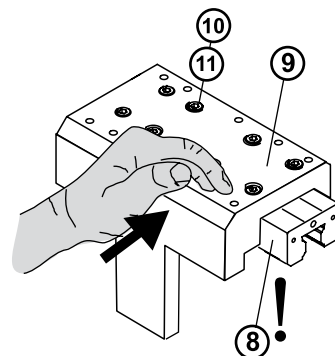
The grinded datum face of the carrier must face the piston yoke.  
(see operating instructions OSP-P part 27)

### Mounting of the Guide Carriage (9)

- Position guide carriage (9) onto the carriers (8),  
**mind alignment towards the piston.**
- Loosely fix with the screws (10) and the washers (11) and then:

#### Note:

- Press guide carriage (9) against the sanded surface of the carriers (8) and fix with the screws (10).



#### Important!

The datum face of the carrier (8) must abut the guide carriage  
Observe the prescribed torques!

| Item | OSP-STL16 | OSP-STL25 | OSP-STL32 | OSP-STL40 | OSP-STL50 |
|------|-----------|-----------|-----------|-----------|-----------|
| 10   | 1.2 Nm    | 3 Nm      | 3 Nm      | 5.5 Nm    | 10 Nm     |

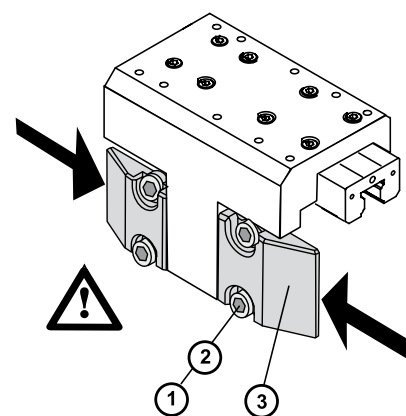
### Mounting of the drive block (3)

- Fix the drive block (3) with the screws (1) and the washers (2) to the piston yoke while exerting pressure on the surfaces of the carrier.



#### Important!

The datum face of the drive blocks must be mounted against the carrier of the guide carriage without any backlash!



Observe the prescribed torque!

| Item | OSP-STL16 | OSP-STL25 | OSP-STL32 | OSP-STL40 | OSP-STL50 |
|------|-----------|-----------|-----------|-----------|-----------|
| 1    | 4.5 Nm    | 9 Nm      | 14.5 Nm   | 14.5 Nm   | 14.5 Nm   |

## Lubrication

There are grease nipples at the front of the carriers (8) for re-lubrication.

The re-lubrication intervals depend on the environmental influences such as dirt, vibrations, impact load etc. Determine the lubrication intervals in accordance with your individual case of application use ensuring that there is always enough grease in the carriers. Make sure that there is always a grease film on the visible on the running surfaces of the guide rail.

We recommend to use a grease in accordance with DIN 51825 with the consistency class NLGI 2 in accordance with DIN 51818.

Lubricants with solids contents (such as Grafit or MoS<sub>2</sub>) must not be used.



**New carriers for the size STL16 must be lubricated prior to commissioning since these components are only preserved.**

The initial lubrication is made in accordance with the below table using three times the subset:

1. grease carrier with the first subset in accordance with the table.
2. slide the carrier with 3 up and down strokes by at least three times the carrier length.
3. repeat the procedures following 1. and 2. two times.
4. check whether a grease film is visible on the guide rail.

**Table amount of grease OSP-STL**

| Type   | Subset for          | cm <sup>3</sup> |
|--------|---------------------|-----------------|
| -STL16 | initial lubrication | 3 x 0,4         |
|        | re-lubrication      | 1 x 0,4         |
| -STL25 | re-lubrication      | 1 x 0,7         |
| -STL32 | re-lubrication      | 1 x 0,7         |
| -STL40 | re-lubrication      | 1 x 0,7         |
| -STL50 | re-lubrication      | 1 x 1,4         |

## Maintenance

Dirt may collect on the exposed guide rails.

To maintain the function of the sealings in the carriers, remove such dirt deposits at regular intervals.

In the case of deviations from our standards or critical applications please refer to our engineering department.

## 2.9 Heavy Duty

### (HD 25 / HD 32 / HD 40 / HD 50)

For fitting and removal of the guide system the complete cylinder unit should be removed from the machine or plant.

- **Note the position of the parts on the exploded view drawing!**

#### Preparation:

- Depressurise the cylinder air lines. Make sure that the cylinder is completely depressurised.
- Switch off all electrical power supply.
- Remove all parts mounted externally on the guide carriage plate.

### 2.9.1 Installing the guide mechanism into a system

Clean the contact surfaces for the guide unit. The accuracy of the guide mechanism depends on the quality of the connecting surface. The contact surfaces should be as flat, parallel and without warping as possible.



#### Information:

The connecting surfaces of the guide unit may not be completely parallel to the level support structure when not fixed – that is permissible and has no effect on the guiding precision when fixed.

- Put the guide unit onto the support structure and fix with fixing screws through the holes or using T-shaped wedge nuts.
- When using **T-shaped wedge nuts**, the distance should not be more than 100 mm.



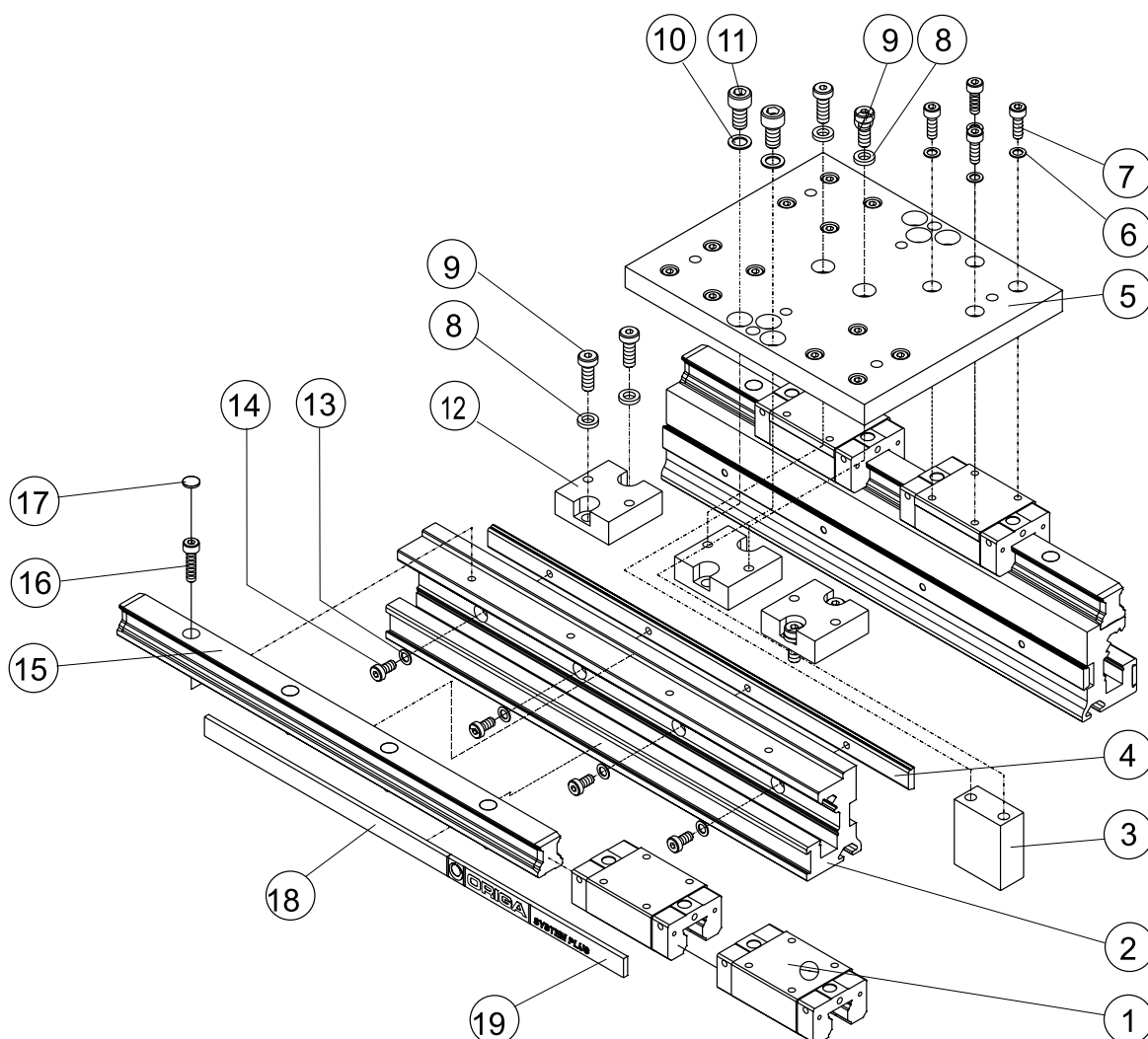
#### Note:

The fixing screws of the guide unit must be secured by providing self-locking (e.g. liquid screw retention, medium hard)

- Tighten screws in accordance with the torque table:

HD 25 / HD 32: M5: 5,5 Nm

HD 40 / HD 50: M6: 10 Nm



## 2.9.2 Maintenance

If the carriages (1) are damaged, we recommend to replace the carriages and the guide rails (15) at the same time.

Only use spare parts from Parker Origa to ensure that the permitted load values specified in the catalogue are maintained.

### Step 1:

#### Dismantling the carriage plate (5)

- Release the pressure from the pressure lines to the cylinder and switch off the power.
- Dismantle all external parts mounted on the carriage plate (5).
- Undo and remove the screws (9) with the washers (8).
- Dismantle the magnet holder (3); to do that take out the screws (11) and washers (10).
- Undo and remove the screws (7) and washers (6) in order to separate the carriage plate (5) from the carriages (1).

#### Dismantling the guide rails (15) and carriages (1)

- To dismantle the guide rails (15) from the contact surfaces of the carrier rails (2) the fixing screws have to be removed.
- Take off the cover caps (17) and remove the fixing screws (16); take off the guide rails with the carriages (1).
- Slide the carriages (1) from the guide rails (5).

#### Dismantling the carrier rails (2)

- Take off fixing screws (14) and washers (13). Take the carrier rails (2) off the OSP.
- Remove the clamping profiles (4). To do that, dismantle an endcap of the OSP (see operating instructions OSP-P or OSP-E).

### Step 2:

#### Mounting the carrier rails (2)

- Check the clamping profiles (4) and replace if necessary.
- Clean the carrier rails (2).
- Fit the clamping profiles (4). To do that, dismantle an endcap of the OSP (see operating instructions OSP-P or OSP-E).
- Fit the OSP endcap back into place (see operating instructions OSP-P or OSP-E).
- Place the carrier rails (2) onto the OSP.
- Slightly tighten the fixing screws (14) with washers (13).
- Align both carrier rails (2) on a level surface and then tighten the fixing screws with the required torque.

#### Mounting the guide rails (15) and carriages (1)

- Clean the guide rails (15), check and replace if necessary.
- Check the carriages (1); replace if necessary.
- Carefully slide two carriages (1) each onto the guide rails (15).

**Be careful not to jam!**

**When fitting new carriages, apply the fitting aid supplied and carefully slide onto the guide rails.**

**Take note of the instructions supplied.**

- Push one guide rail (15) against the stop edge of the carrier rail (2) and tighten with the fixing screws and washers (16, 17) to the required torque.
- Place the second guide rail onto the carrier rail and only lightly tighten the fixing screws.



#### Torques for Screws

| POS.                           | HD 25        | HD 32   | HD 40   | HD 50   |
|--------------------------------|--------------|---------|---------|---------|
| 7                              | 3 Nm         | 3 Nm    | 5,5 Nm  | 10 Nm   |
| 9                              | 9 Nm         | 14,5 Nm | 14,5 Nm | 14,5 Nm |
| 11                             | 10 Nm        | 10 Nm   | 10 Nm   | 10 Nm   |
| (OSP-P) 14                     | 3 Nm         | 3 Nm    | 10 Nm   | 10 Nm   |
| (OSP-E ) 14                    | 1,6 - 2 Nm * | 3 Nm    | -       | 10 Nm   |
| 16                             | 3 Nm         | 3 Nm    | 5,5 Nm  | 10 Nm   |
| * use threadlocker Loctite 243 |              |         |         |         |



### Mounting the carriage plate (5)

- Clean all parts.



#### Note

**Never slide the fully assembled carriage unit onto the guide rail since this could lead to damage of the carriages!**

- Place the carriage plate (5) onto the carriages (1) and fix with the fixing screws (7) and washers (6) to the required torque.
- In order to align the second guide rail in parallel, carry out a double pass with the sledge plate (5) and carriages (1).

Then tighten the fixing screws (16) during a pass movement to the required torque.

- **To avoid tensions:**
- Release the fixing screws of the two carriages again from the two guide rails and run two passes. Then tighten the fixing screws again with the required torque.
- Mount the cover caps.
- Slide the guide carriage centrally over the piston of the cylinder and fix the middle driver (12) with the washers (8) and screws (9).

#### Observe required torque!

- Tighten the magnet holder (3) with the fixing screws (11) and washers (10) on the desired side and to the required torque.



#### Note

**Take note of the torque according to the table (page 22)!**

**It is imperative that the three drivers (12) are fitted without any movement to each other!**

### Arrangement of magnetic switches

The magnetic switches can be fitted on both sides along the whole length.



#### Lubrication

#### Information

**Only use roller bearing grease for subsequent lubrication of the carriages.**

There are grease nipples at the front of the carriers (1) for re-lubrication.

The re-lubrication intervals depend on the environmental influences such as dirt, use of cooling lubricants, vibrations, impact load etc.

Determine the lubrication intervals in accordance with your individual case of application thus ensuring that there is always enough grease in the carriers. Make sure that there is always a grease film on the visible on the running surfaces of the guide rail.

We recommend to use a grease in accordance with DIN 51825 with the consistency class NLGI 2 in accordance with DIN 51818.

Lubricants with solids contents (such as Grafit or MoS<sub>2</sub>) must not be used.

Magnetic switch

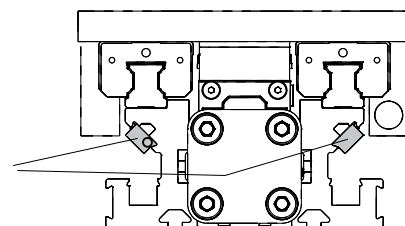


Table amount of grease OSP-HD

| Typ          | Subset for      | cm <sup>3</sup> |
|--------------|-----------------|-----------------|
| HD25, 32, 40 | re- lubrication | 1 x 0,7         |
| HD50         | re- lubrication | 1 x 1,4         |

#### Maintenance

Dirt may collect on the exposed guide rails.

To maintain the function of the sealings in the carriers, remove such dirt deposits at regular intervals.

In the case of deviations from our standards or critical applications please refer to our engineering department.

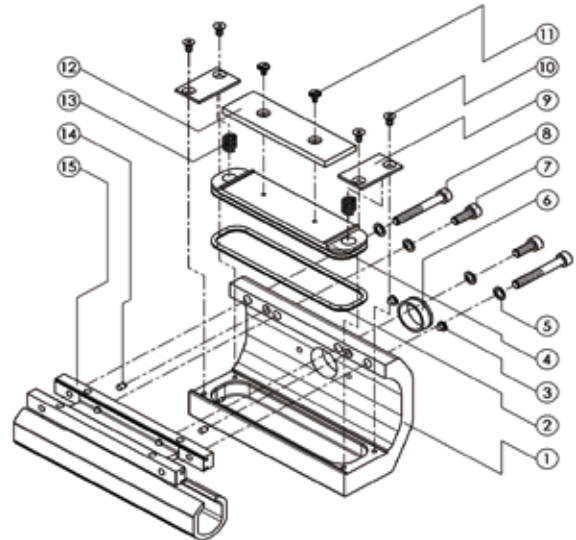
## 2.10 Active Brake

(AB25 / AB32 / AB40 / AB50 / AB63 / AB80)

Usually it is not necessary to remove the cylinder from the machine or plant.

### Dismantling of the Active Brake

- Depressurise the cylinder and brake lines and switch off all electrical power supply.
- Remove the compressed air line from the brake air connection.
- Remove the screws (7 + 8) with their washers (5) and take the brake housing (1) off the cylinder piston (15).
- Unscrew the screws (10) and remove the plates (9) and springs (13) from the brake housing (1).
- To remove the brake piston (4), apply compressed air to its air connection and blow it out (do not use sharp tools on the piston!).



### Danger

**hold the brake piston while blowing it out!**

- **For AB40 / AB50 / AB63 / AB80 only:**  
loosen the screws (11) and remove the brake lining (12) from the brake piston (4).
- Remove the O-ring (2) from the brake piston (4).
- Inspect the parts – replace any damaged or worn parts: O-ring (2) and brake lining (12) or brake piston with brake lining (4 + 12) on AB25 and AB32.

### Reassembly of the Brake

- Clean all the parts, the inside of the brake piston chamber and the brake air connection.
- **For AB40 / AB50 / AB63 / AB80 only:**  
fit the brake lining (12) onto the brake piston (4).
- Apply a locking medium (Loctite low-strength is recommended) to the screws (11).
- Grease the walls of the brake piston chamber and the groove in the brake piston lightly with grease (Order No. 1598).



### Note:

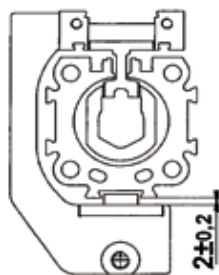
**The brake lining must be grease-free.**

- Place the O-ring (2) in the brake piston (4) and grease the O-ring lightly.
- Fit the brake piston (4) into the brake housing (1).
- Fit the springs (13) and plates (9). Apply a locking medium to the screws (10) and tighten them.
- Fit the brake housing (1) onto the cylinder piston (15) with the screws (7 + 8) and washers (5). Additionally for the AB40 and AB50 use locating pins(14).

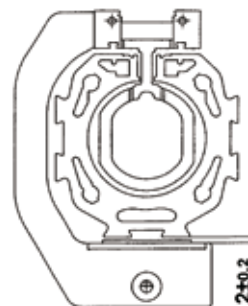


### Note

**When reinstalling the brake housing, adjust the clearance between the cylinder profile and the plate (9) to 2 mm ± 0.2 mm with a feeler gauge (see diagram).**



AB25 / AB32



AB40 / AB50 / AB63 / AB80

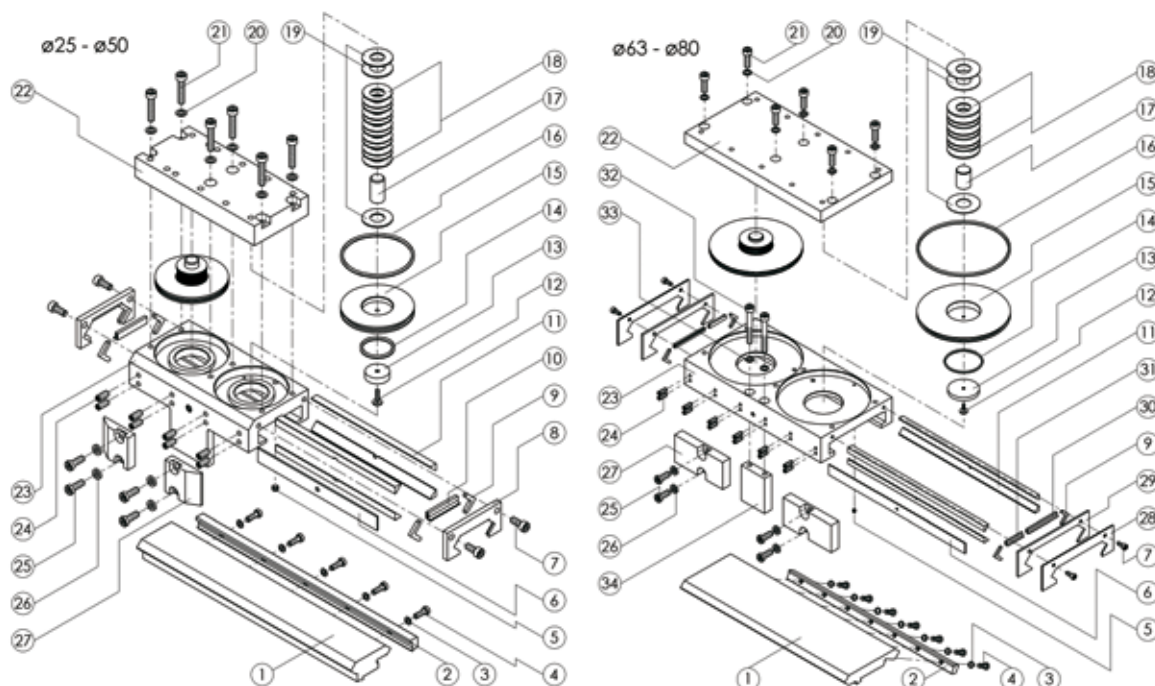
### Torques for Screws

| Item  | AB 25  | AB 32  | AB 40    | AB 50    | AB 63    | AB 80    |
|-------|--------|--------|----------|----------|----------|----------|
| 7 + 8 | 5,5 Nm | 9,7 Nm | 9,7 Nm   | 9,7 Nm   | 23 Nm    | 47 Nm    |
| 10    | 2,9 Nm | 2,9 Nm | 2,9 Nm   | 2,9 Nm   | 5,5 Nm   | 5,5 Nm   |
| 11    | ---    | ---    | 0,8-1 Nm | 0,8-1 Nm | 0,8-1 Nm | 0,8-1 Nm |

## 2.11 Multi-Brake-Slideline

(MB-SL25 / MB-SL32 / MB-SL40 / MB-SL50 / MB-SL63 / MB-SL80)

For fitting and removal of the guide system the complete cylinder unit should be removed from the machine or plant.



MB-SL25 / MB-SL32 / MB-SL40 / MB-SL50    MB-SL63 / MB-SL80

### Dismantling of the Guide Carriage

- Depressurise the cylinder and brake lines and switch off all electrical power supply.
- Remove all parts mounted externally on the plate (22).
- Unscrew the screws (21) with their washers (20), backing off each screw a little at a time, so that the plate (22) does not tip and jam when it is removed from the guide carriage (23).
- Remove the plate (22) from the guide carriage (23).
- Unscrew one drive block (27) from the piston of the OSP-P so that the guide carriage can be moved.
- Loosen the screws (7) in the wiper cover (8 or 28 + 29).
- For the OSP-P40, OSP-P50, OSP-P63 and OSP-P80 only: remove one end cap of the cylinder.
- Slide the complete guide carriage (23) off the guide rail (1).
- Unscrew the wiper covers (8 or 28 + 29) from both ends of the guide carriage (23).
- Inspect the parts – replace damaged or worn parts such as: wiper (10 or 30 + 31), slide profile (11) and felt (9) (service kit).

### Dismantling of the Brake

- Remove the saucer springs (18) and pressure plates (19) and press the brake piston (15) out of the guide carriage (23) from the brake lining side.
- Remove the screws (12) and remove the brake lining (13) and guide pin (17) from the brake piston (15), and also the O-rings (14) and (16).
- Inspect the parts – replace damaged or worn parts such as: O-rings (14) and (16) and brake lining (13).

## Dismantling and Reassembly of the Guide Rail

- Unscrew the screws (4) with their washers (3). Remove the guide rail (1) and clamping rail (2) from the cylinder profile.
- Clean all the parts.
- Centre the guide rail (1) on the cylinder profile. Secure the guide rail (1) and clamping rail (2) with the screws (4) and their washers (3) (use the specified torque).

## Reassembly of the Brake

- Clean all the parts, the inside of the brake piston chamber and the brake air connection.
- Centre the guide pin (17) on the brake piston with the help of the pressure plate (19) and fit the brake lining (13) on the brake piston (15), applying a locking medium (Loctite low-strength is recommended) to the screw (12) and tightening it.
- Grease the walls of the brake piston chamber and the groove in the brake piston lightly with guide grease (Order No. 10550).



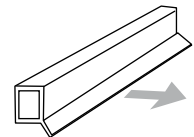
### Note

**The brake lining must be grease-free.**

- Locate the O-rings (14) and (16) in the brake piston (15) and grease the O-rings lightly.
- Fit the brake piston (15) into the guide carriage (23).

## Reassembly of the Guide Carriage

- Clean all the parts.
- Grease the felts (9) with guide grease (Order No. 10550).
- Lay the wipers (10 or 30 + 31) and felts (9) in the wiper covers. The sealing lip of the wiper must be outwards (see drawing).
- Back off the adjusting screws (24) in the guide carriage.
- Lay in the support strip (6) on the same side as the adjusting screws.
- Place 2 slide profiles (11) per side in the guide carriage. The edges of the slide profiles in which grooves are cut (to allow grease from the grease nipples to get to the guide rail) must touch each other.
- Screw on the two wiper covers (8 or 28 + 29) loosely with the screws (7).



## Remounting the Reassembled Guide Carriage on the Guide Rail

- Push the complete guide carriage assembly carefully onto the guide rail with the side with the adjusting screws towards the piston.
- If necessary move the felt wiper carefully into its correct position with a screwdriver.

## Adjustment of Play

- Tighten the self-locking adjusting screws (24), individually from the middle working outwards, with the specified torque. If non-self-locking screws are used (24), use a locking medium (Loctite low-strength is recommended) and tighten the screws from the middle working outwards until the guide carriage can no longer be moved by hand.
- Tap the sides of the guide carriage (23) gently with a rubber hammer until the slide profiles (11) have settled into position and then tighten all the adjusting screws (24) again (see above).
- Loosen all the adjusting screws (24) about 1/4 to 1/2 turn individually from the middle working outwards. When correctly adjusted the guide carriage should be easily movable by hand but with no play.
- Tighten the screws (7) in the wiper cover (8 or 28 + 29) with the prescribed torque.

## Lubrication

The grease nipples on both sides of the guide carriage (23) should be filled with guide grease (Order No. 10550) until a thin film of grease can be seen on the guide rail when the guide carriage is moved by hand.

## Final assembly

- Position the guide carriage centrally over the cylinder piston and secure the drive blocks (27) with the washers (26) and screws (25).



### Note:

**The drive blocks (27) must be fitted against the guide carriage (23) or carrier (34) with no play !!!**  
**See the table for the correct torque !!!**

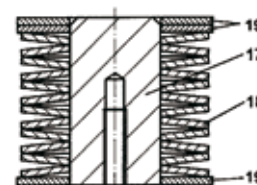
- Push the saucer springs (18) and pressure plates (19) onto the guide pin.



**Note:**

See the diagram for the correct arrangement of the saucer springs and pressure plates. Depending on the brake type the numbers of saucer springs (18) and pressure plates (19) are different.

- Lay the plate (22) on the pressure plates (19).
- Tighten the screws (21) with their washers (20) gradually and evenly until the plate (22) lies completely flat on the guide carriage (23).
- Refit the end cap of the OSP-P, if applicable.



**Torques for screws**

| Item | MB-SL 25                   | MB-SL 32   | MB-SL 40   | MB-SL 50   | MB-SL 63   | MB-SL 80   |
|------|----------------------------|------------|------------|------------|------------|------------|
| 4    | 3 Nm                       | 3 Nm       | 10 Nm      | 10 Nm      | 10 Nm      | 10 Nm      |
| 7    | 5.5 Nm                     | 5.5 Nm     | 5.5 Nm     | 5.5 Nm     | 5.5 Nm     | 5.5 Nm     |
| 12   | 0.8 - 1 Nm                 | 0.8 - 1 Nm | 0.8 - 1 Nm | 0.8 - 1 Nm | 0.8 - 1 Nm | 0.8 - 1 Nm |
| 21   | 5.5 Nm                     | 10 Nm      | 10 Nm      | 10 Nm      | 20 Nm      | 20 Nm      |
| 24   | 2.5 - 3 Nm                 | 2.5 - 3 Nm | 2.5 - 3 Nm | 2.5 - 3 Nm | 2.5 - 3 Nm | 2.5 - 3 Nm |
|      | (only self-locking screws) |            |            |            |            |            |
| 25   | 9 Nm                       | 14.5 Nm    | 14.5 Nm    | 14.5 Nm    | 35 Nm      | 40 Nm      |
| 32   | ---                        | ---        | ---        | ---        | 20 Nm      | 20 Nm      |

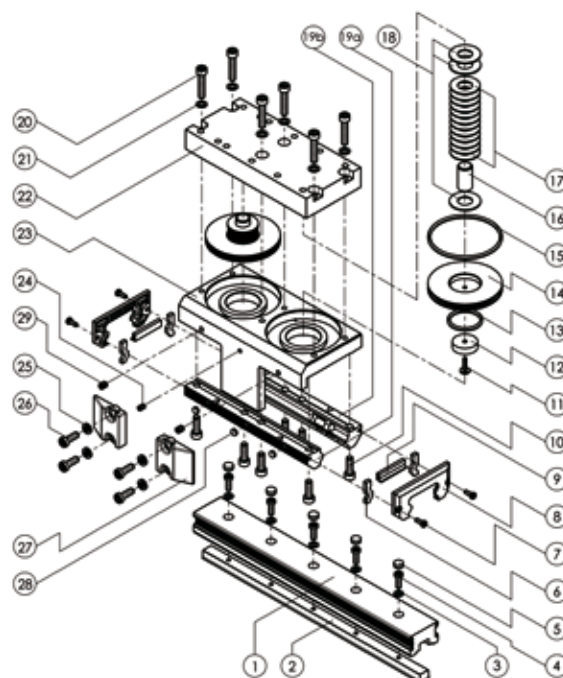
## 2.12 Multi-Brake - Proline

### (MB-PL25 / MB-PL32 / MB-PL40 / MB-PL50)

For fitting and removal of the guide system the complete cylinder unit should be removed from the machine or plant.

#### Dismantling of the Guide Carriage

- Depressurise the cylinder and brake lines and switch off all electrical power supply.
- Remove all parts mounted externally on the plate (22).
- Unscrew the screws (20) with their washers (21), backing off each screw a little at a time, so that the plate (22) does not tip and jam when it is removed from the guide carriage (23).
- Remove the plate (22) from the guide carriage (23).
- Unscrew the drive block (27) from the piston of the OSP-P so that the guide carriage can be moved.
- Loosen the screws (7) in the wiper cover (8).
- For the OSP-P40, OSP-P50 only: remove one end cap of the cylinder.
- Slide the complete guide carriage off the double rail (1).
- Remove the wiper covers (8) with the felts (6) and wipers (9) from both ends of the guide carriage (23).
- Loosen and remove the screws (10) and separate the pair of roller shoes (19) from the guide carriage (23).



## Dismantling of the Brake

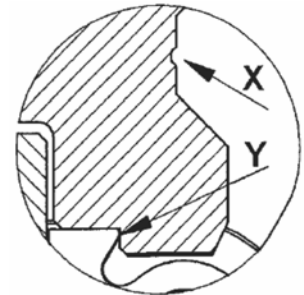
- Remove the saucer springs (17) and pressure plates (18) and press the brake piston (14) out of the guide carriage (23) from the brake lining side.
- Remove the screw (11) and remove the brake lining (12) and guide pin (16) from the brake piston (14), and also the O-rings (13) and (15).
- Inspect the parts – replace any damaged or worn parts such as the O-rings (13) and (15) and brake lining (12).

## Dismantling of the Double Rail

- Remove the cap plugs (5).
- Remove the screws (4) and washers (3) and take the double rail (1) off the OSP cylinder.
- If necessary: remove the end caps of the OSP cylinder and push the clamping profile out of the slot in the cylinder profile.

## Reassembly of the Double Rail

- Inspect the double rail (1) and replace it if necessary.
- Clean all the parts.
- If necessary: remove the end caps of the OSP cylinder and push the clamping profile into the slot in the cylinder profile.
- Fit the double rail (1) and clamping profile (2) onto the OSP cylinder with the screws (4) and washers (3) (note the maximum torque), centring the rails on the cylinder profile. The groove (X) on the side of the double rail (1) must be on the piston side. The bearing surface (Y) of the double rail (1), which is on the same side as the groove (X), must be positioned against the dovetail profile of the OSP cylinder profile.
- Insert new cap plugs (5) flush with or slightly below the surface of the double rail (1).



## Reassembly of the Brake

- Clean all the parts, the inside of the brake piston chamber and the brake air connection.
- Centre the guide pin (16) on the brake piston with the help of the pressure plate (18) and fit the brake lining (12) onto the brake piston (14). Apply a locking medium to the screw (11) (Loctite low-strength is recommended) and tighten it.
- Grease the walls of the brake piston chamber and the groove in the brake piston lightly with guide grease (Order No. 10550).

### Note:

**The brake lining must be grease-free.**

- Locate the O-rings (13) and (15) in the brake piston (14) and grease the O-rings lightly.
- Fit the brake piston (14) into the guide carriage (23).



## Reassembly of the Guide Carriage

- Inspect the parts: the pair of roller shoes (19), wiper (9) and felt (6) and replace any damaged or worn parts.
- Clean all the parts.
- For adjustment of the roller shoes there is a fixed side and an adjustment side. The roller shoe on the fixed side (19b) is secured firmly to the underside of the guide carriage (23) with the screws (10).
- Place the three washers (28) in the roller shoe (19a) on the adjustment side and fit it against the guide carriage (23) with the screws (10). Tighten the screws (10) until the roller shoe lies fully on the guide carriage but can still be moved.
- Slide the complete guide carriage carefully onto the guide rail with the side with the adjusting screw (24) towards the piston of the OSP.
- Adjust the roller shoes (19) with the set screw (24). The roller shoes must be adjusted in the unloaded condition and there should be no play at the loosest point on the double rail (1). At the tightest point on the double rail the resistance to movement must not exceed the maximum value. The correct and maximum resistance to movement are as follows:



| Size      | MB-PL 25 | MB-PL 32 | MB-PL 40 | MB-PL 50 |
|-----------|----------|----------|----------|----------|
| Correct ≤ | 1 N      | 1,5 N    | 2 N      | 3 N      |
| Maximum ≤ | 6 N      | 9 N      | 10 N     | 12 N     |

- First tighten the screws (10) with the specified torque and afterwards tighten the both set screws(29) with the specified torque.
- Fit the wiper covers (8), felts (6) and wipers (9) with the screws (7).

### Lubrication

The Proline roller guide is lifetime-lubricated.

### Final Assembly

- Position the guide carriage (23) centrally over the piston of the cylinder and secure the drive blocks (27) with the washers (25) and screws (26).



### Note

**The drive blocks (27) must be fitted against the guide carriage (23) with no play !!!  
See the correct torque in the table !!!**

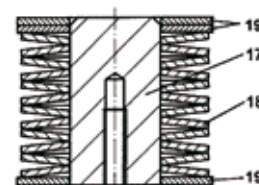
- Push the saucer springs (17) and pressure plates (18) onto the guide pin.



### Note

**See the diagram for the correct arrangement of the saucer springs and pressure plates and assemble it.  
According to the brake type the numbers of saucer springs (17) and pressure plates (18) are different.**

- Lay the plate (22) on the pressure plates (18).
- Tighten the screws (20) with their washers (21) gradually and evenly until the plate (22) lies flat on the guide carriage (23).
- Refit the end caps of the OSP-P, if applicable.

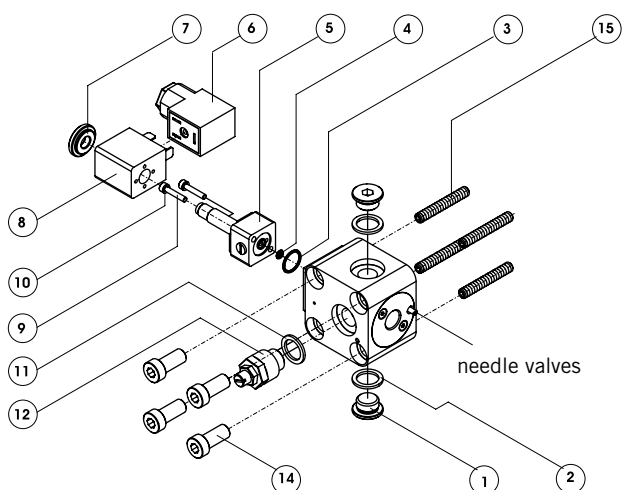


### Torques for Screws

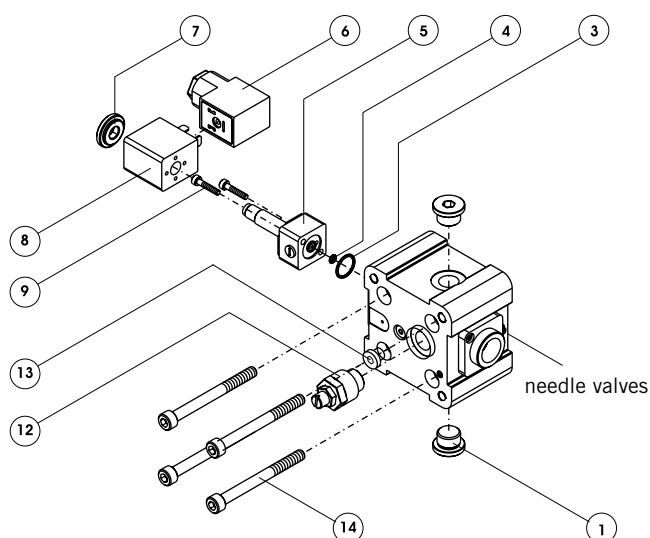
| Item | MB-PL 25 | MB-PL 32 | MB-PL 40 | MB-PL 50 |
|------|----------|----------|----------|----------|
| 4    | 3 Nm     | 10 Nm    | 10 Nm    | 10 Nm    |
| 7    | 1,2 Nm   | 1,2 Nm   | 1,2 Nm   | 1,2 Nm   |
| 10   | 5,5 Nm   | 10 Nm    | 10 Nm    | 20 Nm    |
| 11   | 0,8-1 Nm | 0,8-1 Nm | 0,8-1 Nm | 0,8-1 Nm |
| 20   | 5,5 Nm   | 10 Nm    | 10 Nm    | 10 Nm    |
| 26   | 9 Nm     | 14,5 Nm  | 14,5 Nm  | 14,5 Nm  |
| 29   | 0,5 Nm   | 0,5 Nm   | 0,5 Nm   | 0,5 Nm   |



## 2.13 Integrated 3/2 Way Valves V0E



OSP-P25 / OSP-P32



OSP-P40 / OSP-P50

### Fault-Finding

(only with machine switched off)

If faulty valve is suspected:

- Check actuating signal and voltage at solenoid.
- Check functioning with manual override (red turn button on pilot valve). If valve works, only replace solenoid coil (28).
- If cylinder speed is reduced: unscrew throttle silencer (35) and wash it or replace it.
- Override selector should be in the zero position.

### Rotating the Valve

The VOE valve can be rotated 4 x 90° to position the air connection as required.

- Remove end cap screws (14).
- Rotate valve housing to desired position.
- Refit end cap screws (14) and tighten to specified torque. Take care that the two O-rings between valve housing and cushioning spigot are not damaged.

### Rotating the Pilot Valve and Solenoid

The pilot valve of the VOE valve can be rotated 180° to position the manual override turn button as required.

- Remove screws (9).
- Rotate pilot valve (5) to desired position.
- Refit screws (9) and tighten to specified torque. Take care that the two O-rings (3) and (4) are not damaged.
- Solenoid (8) can be rotated 4 x 90° to position connector (6) as required: to do this, remove knurled nut (7), turn solenoid (8) to desired position and retighten knurled nut.

### Speed Regulation

- The throttle silencer (12) can be exchanged with either of the screw plugs (1) to improve the accessibility of the adjusting screw. The adjusting screw is used to regulate the speed of the cylinder. The plug screws (1) can if desired be replaced by a second or third throttle silencer (12) to increase exhaust air flow rate and thereby the speed of the piston.
- If the piston speed is changed, the end cushioning must be adjusted accordingly with the valve needle (14). See „Chapter 5 – Commissioning“ in the OSP-P Operating Instructions.

### Air Connection V6

- For OSP-P40 and OSP-P50:  
The air connection with screw plug (13) provides direct connection to the cylinder chamber, e.g. for an external valve or a pressure sensor.

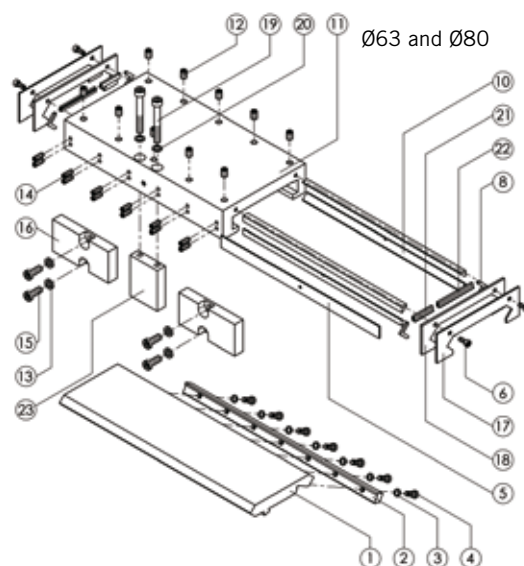
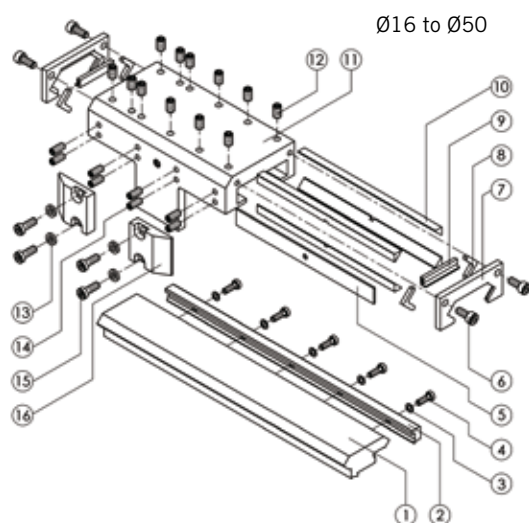
### Torques for Screws

| Item | OSP-P25 | OSP-P32 | OSP-P40 | OSP-P50 |
|------|---------|---------|---------|---------|
| 9    | 1,2 Nm  | 1,2 Nm  | 1,2 Nm  | 1,2 Nm  |
| 14   | 8 Nm    | 10 Nm   | 10 Nm   | 10 Nm   |

## 3 Replacement Parts

### 3.1 Slideline

(SL16 / SL25 / SL32 / SL40 / SL50 / SL63 / SL80)



#### 3.1.1 Modules for OSP

| ITEM | DESCRIPTION                              | ORDER NO. ** |       |       |       |       |       |       |
|------|--|--------------|-------|-------|-------|-------|-------|-------|
|      |  | SL 16        | SL 25 | SL 32 | SL 40 | SL 50 | SL 63 | SL 80 |
|      | SLIDELINE PLAIN BEARING GUIDE            | 20341        | 20342 | 20196 | 20343 | 20195 | 20853 | 21000 |
|      | SLIDELINE PLAIN BEARING GUIDE, STAINLESS | 20344        | 20345 | 20346 | 20347 | 20348 | 20854 | 21001 |

#### 3.1.2 Replacement Parts

| ITEM | DESCRIPTION               | ORDER NO. * (**) |       |       |       |       |       |       |
|------|---------------------------|------------------|-------|-------|-------|-------|-------|-------|
|      |                           | SL 16            | SL 25 | SL 32 | SL 40 | SL 50 | SL 63 | SL 80 |
| 1    | GUIDE RAIL **             | 10912            | 10913 | 10914 | 10915 | 10916 | 10939 | 10941 |
| 2    | CLAMPING RAIL **          | 10917            | 10918 | 10919 | 10920 | 10921 | 10940 | 10942 |
| 3    | WASHER                    | —                | 3954  | 3954  | 3789  | 3789  | 3789  | 3789  |
| 3    | WASHER, STAINLESS         | —                | 4395  | 4395  | 3792  | 3792  | 3792  | 3792  |
| 4    | SCREW                     | 10680            | 10810 | 10810 | 10610 | 10610 | 10610 | 10610 |
| 4    | SCREW, STAINLESS          | 10681            | 10811 | 10811 | 10683 | 10683 | 10683 | 10683 |
| 5    | SUPPORT STRIP             | 10552            | 10571 | 10590 | 10570 | 10798 | 11547 | 11547 |
| 6    | SCREW                     | 3278             | 2742  | 2742  | 1062  | 2742  | 2742  | 2742  |
| 6    | SCREW, STAINLESS          | 10167            | 3716  | 3716  | 1063  | 3716  | 3716  | 3716  |
| 7    | WIPER COVER               | 10183            | 1661  | 1681  | 10487 | 10504 | —     | —     |
| 8    | FELT                      | 3329             | 1619  | 1665  | 10665 | 10665 | 11543 | 11543 |
| 9    | WIPER                     | 3327             | 1663  | 1683  | 10471 | 10472 | —     | —     |
| 10   | SLIDE PROFILE             | 10553            | 10177 | 10591 | 10569 | 10797 | 11546 | 11546 |
| 11   | GUIDE CARRIAGE            | 11469            | 11470 | 11471 | 11472 | 11473 | 11739 | 11739 |
| 11   | GUIDE CARRIAGE, STAINLESS | 11469            | 11478 | 11479 | 11480 | 11481 | 11739 | 11739 |
| 12   | SET SCREW                 | 0429             | 1116  | 1116  | 1116  | 1116  | 1117  | 1117  |
| 12   | SET SCREW, STAINLESS      | 0429             | 1093  | 1093  | 1093  | 1093  | 1038  | 1038  |
| 13   | WASHER                    | 11607            | 11608 | 11609 | 11609 | 11609 | 11610 | 11830 |
| 13   | WASHER, STAINLESS         | 11607            | 11611 | 11612 | 11612 | 11612 | 11613 | 11831 |
| 14   | SET SCREW                 | 11916            | 10281 | 10281 | 2262  | 11918 | 11550 | 11550 |
| 14   | SET SCREW, STAINLESS      | 11917            | 10682 | 10682 | 2255  | 11919 | 11550 | 11550 |

\* Please use this order pattern: ORDER NO. + „FIL“, example: 11917FIL

\*\* Please use this order pattern: ORDER NO. + stroke length [mm, 5 digits], example (1 m stroke): 20341-01000

## ORDER NO. \*

| ITEM | DESCRIPTION        | SL 16 | SL 25 | SL 32 | SL 40 | SL 50 | SL 63 | SL 80 |
|------|--------------------|-------|-------|-------|-------|-------|-------|-------|
| 15   | SCREW              | 11614 | 11615 | 11616 | 11616 | 11616 | 11617 | 11256 |
| 15   | SCREW, STAINLESS   | 11614 | 11615 | 11616 | 11616 | 11616 | 11617 | 11257 |
| 16   | DRIVE BLOCK        | 10642 | 10643 | 10644 | 10644 | 10645 | 11541 | 11828 |
| 17   | WIPER COVER, OUTER | —     | —     | —     | —     | —     | 11545 | 11545 |
| 18   | WIPER COVER, INNER | —     | —     | —     | —     | —     | 11544 | 11544 |
| 19   | SCREW              | —     | —     | —     | —     | —     | 1251  | 1251  |
| 19   | SCREW, STAINLESS   | —     | —     | —     | —     | —     | 1229  | 1229  |
| 20   | SCREW              | —     | —     | —     | —     | —     | 4374  | 4374  |
| 20   | SCREW, STAINLESS   | —     | —     | —     | —     | —     | 4397  | 4397  |
| 21   | WIPER              | —     | —     | —     | —     | —     | 1663  | 1663  |
| 22   | WIPER              | —     | —     | —     | —     | —     | 10471 | 10471 |
| 23   | CARRIER            | —     | —     | —     | —     | —     | 11542 | 11829 |

## 3.1.3 Replacement Assemblies

## ORDER NO. \*

| ITEM            | DESCRIPTION                         | SL 16 | SL 25 | SL 32 | SL 40 | SL 50 | SL 63 | SL 80 |
|-----------------|-------------------------------------|-------|-------|-------|-------|-------|-------|-------|
| 5,6,7,8,9,10,   | GUIDE CARRIAGE, COMPLETE            | 11399 | 11401 | 11404 | 11407 | 11410 | —     | —     |
| 11,12,14        | GUIDE CARRIAGE, COMPLETE, STAINLESS | 11400 | 11402 | 11405 | 11408 | 11411 | —     | —     |
| 5,6,8,10,11,12, | GUIDE CARRIAGE, COMPLETE            | —     | —     | —     | —     | —     | 11888 | 11888 |
| 14,17,18,21,22  | GUIDE CARRIAGE, COMPLETE, STAINLESS | —     | —     | —     | —     | —     | 11889 | 11889 |
| 8,9,10          | SERVICE KIT                         | 11066 | 11067 | 11068 | 11069 | 11070 | —     | —     |
| 8,10,21,22      | (INC. GUIDE GREASE, 8ML TUBE)       | —     | —     | —     | —     | —     | 11094 | 11094 |

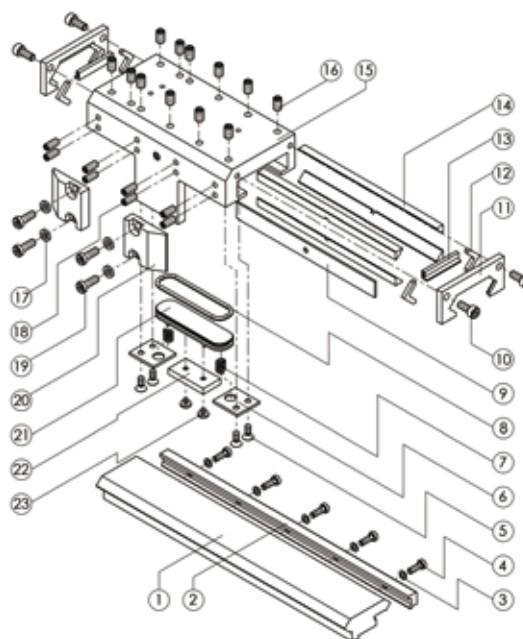
## 3.1.4 Lubrication

## ORDER NO. \*

|                         |       |
|-------------------------|-------|
| GUIDE GREASE, 8 ML TUBE | 10550 |
| GUIDE GREASE, 0.5 KG    | 11606 |

## 3.2 Slideline with Brake

(SL25 / SL32 / SL40 / SL50)



\* Please use this order pattern: ORDER NO: + „FIL“, example: 11614FIL

## 3.2.1 Modules for OSP

| DESCRIPTION                              | ORDER NO. ** |       |       |       |
|--|--------------|-------|-------|-------|
|  | SL 25        | SL 32 | SL 40 | SL 50 |
| SLIDELINE PLAIN BEARING GUIDE WITH BRAKE | 20409        | 20410 | 20411 | 20412 |

## 3.2.2 Replacement Parts

| ITEM | DESCRIPTION      | ORDER NO. * (**) |       |       |       |
|------|------------------|------------------|-------|-------|-------|
|      |                  | SL 25            | SL 32 | SL 40 | SL 50 |
| 1    | GUIDE RAIL **    | 10913            | 10914 | 10915 | 10916 |
| 2    | CLAMPING RAIL ** | 10918            | 10919 | 10920 | 10921 |
| 3    | WASHER           | 3954             | 3954  | 3789  | 3789  |
| 4    | SCREW            | 10810            | 10810 | 10610 | 10610 |
| 5    | SCREW            | 1549             | 1549  | 1549  | 1549  |
| 6    | PLATE            | 11207            | 11207 | 11207 | 11207 |
| 7    | SPRING           | 1121             | 1121  | 1121  | 1128  |
| 8    | O-RING           | 11218            | 11219 | 11220 | 11221 |
| 9    | SUPPORT STRIP    | 10571            | 10590 | 10570 | 10798 |
| 10   | SCREW            | 2742             | 2742  | 1062  | 2742  |
| 11   | WIPER COVER      | 1661             | 1681  | 10487 | 10504 |
| 12   | FELT             | 1619             | 1665  | 10665 | 10665 |
| 13   | WIPER            | 1663             | 1683  | 10471 | 10472 |
| 14   | SLIDE PROFILE    | 10177            | 10591 | 10569 | 10797 |
| 15   | GUIDE CARRIAGE   | 11474            | 11475 | 11476 | 11477 |
| 16   | SET SCREW        | 1116             | 1116  | 1116  | 1116  |
| 17   | WASHER           | 11608            | 11609 | 11609 | 11609 |
| 18   | SET SCREW        | 10281            | 10281 | 2262  | 11918 |
| 19   | SCREW            | 11615            | 11616 | 11616 | 11616 |
| 20   | DRIVE BLOCK      | 10643            | 10644 | 10644 | 10645 |
| 21   | BRAKE PISTON     | 11205            | 11209 | 11212 | 11215 |
| 22   | BRAKE LINING     | 11206            | 11210 | 11213 | 11216 |
| 23   | SCREW            | 11217            | 11217 | 11217 | 11217 |

## 3.2.3 Replacement Assemblies

| ITEM   | DESCRIPTION                                | ORDER NO. * |       |       |       |
|--|--|-------------|-------|-------|-------|
|  |  | SL 25       | SL 32 | SL 40 | SL 50 |
| 5,6,7,8,<br>9,10,11,12,13,14,15,16,18,21,22,23 | GUIDE CARRIAGE, COMPLETE                   | 11403       | 11406 | 11409 | 11412 |
| 8,12,<br>13,14,22                              | SERVICE KIT (INC. GUIDE GREASE, 8 ML TUBE) | 11095       | 11096 | 11097 | 11098 |

## 3.2.4 Lubrication

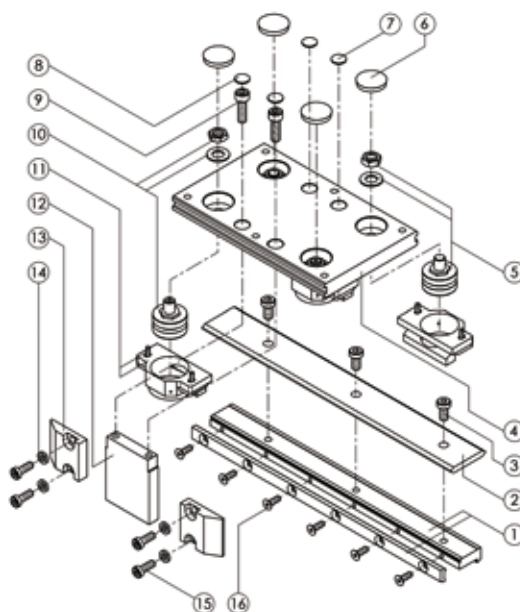
| DESCRIPTION             | ORDER NO. * |
|-------------------------|-------------|
| GUIDE GREASE, 8 ML TUBE | 10550       |
| GUIDE GREASE, 0.5 KG    | 11606       |

\* Please use this order pattern: ORDER NO. + „FIL“, example: 11095FIL

\*\* Please use this order pattern: ORDER NO. + stroke length [mm, 5 digits], example (1 m stroke): 10913-01000

### 3.3 Powerslide

PS16/25 – PS25/25 – PS25/35 – PS25/44 - PS32/35 – PS32/44 – PS40/44 –  
PS40/60 – PS50/60 – PS50/76



#### 3.3.1 Modules for OSP

|      |  | ORDER NO. ** |             |             |             |             |             |             |             |             |             |
|------|--|--------------|-------------|-------------|-------------|-------------|-------------|-------------|-------------|-------------|-------------|
| ITEM | DESCRIPTION  | PS<br>16/25  | PS<br>25/25 | PS<br>25/35 | PS<br>25/44 | PS<br>32/35 | PS<br>32/44 | PS<br>40/44 | PS<br>40/60 | PS<br>50/60 | PS<br>50/76 |
|      | POWERSLIDE ROLLER GUIDE<br>FOR OSP-P AND OSP-E-SCREW | 20285        | 20015       | 20016       | 20017       | 20286       | 20287       | 20033       | 20034       | 20288       | 20289       |
|      | FOR OSP-E-BELT                                       | —            | 20304       | 20305       | 20306       | 20307       | 20308       | —           | —           | 20309       | 20310       |
|      | POWERSLIDE ROLLER GUIDE<br>STAINLESS                 | 20294        | 20295       | 20296       | 20297       | 20298       | 20299       | 20300       | 20301       | 20302       | 20303       |

#### 3.3.2 Replacement Parts

|      |  | ORDER NO. * (**) |             |             |             |             |             |             |             |             |             |
|------|--|------------------|-------------|-------------|-------------|-------------|-------------|-------------|-------------|-------------|-------------|
| ITEM | DESCRIPTION                                    | PS<br>16/25      | PS<br>25/25 | PS<br>25/35 | PS<br>25/44 | PS<br>32/35 | PS<br>32/44 | PS<br>40/44 | PS<br>40/60 | PS<br>50/60 | PS<br>50/76 |
| 1    | CLAMPING RAIL<br>FOR OSP-P AND OSP-E-SCREW **  | 11001            | 11002       | 11003       | 11004       | 11005       | 11006       | 11007       | 11008       | 11009       | 11010       |
| 1    | FOR OSP-E-BELT **                              | —                | 11031       | 11032       | 11033       | 11034       | 11035       | —           | —           | 11036       | 11037       |
| 2    | GUIDE RAIL FOR FOR<br>OSP-P AND OSP-E-SCREW ** | 11011            | 11012       | 11013       | 11014       | 11015       | 11016       | 11017       | 11018       | 11019       | 11020       |
| 2    | FOR OSP-E-BELT **                              | —                | 11038       | 11039       | 11040       | 11041       | 11042       | —           | —           | 11043       | 11044       |
| 3    | SCREW  | 10610            | 10610       | 3275        | 10610       | 3275        | 10610       | 1879        | 10684       | 10684       | 10719       |
| 3    | SCREW STAINLESS                                | 10683            | 10683       | 3717        | 10683       | 3717        | 10683       | 10779       | 10684       | 10684       | 10834       |
| 4    | GUIDE CARRIAGE                                 | 10636            | 10637       | 10638       | 10639       | 10638       | 10639       | 10639       | 10640       | 10640       | 10641       |
| 5    | ROLLER, CENTRIC                                | 10620            | 10620       | 10620       | 10622       | 10620       | 10622       | 10622       | 10622       | 10622       | 10624       |
| 6    | CAP  | 10658            | 10658       | 10658       | 10658       | 10658       | 10659       | 10659       | 10659       | 10659       | 10660       |
| 7    | CAP  | —                | —           | 10184       | 10184       | 10184       | 10184       | 10184       | 10657       | 10184       | —           |
| 8    | CAP  | 10656            | 10184       | 10184       | 10184       | 10184       | 10184       | 10184       | 10184       | 10657       | 10657       |
| 9    | SCREW  | 3278             | 10610       | 1273        | 1273        | 0666        | 1273        | 1273        | 1273        | 10685       | 10686       |
| 9    | SCREW STAINLESS                                | 10167            | 10683       | 0394        | 0394        | 0667        | 0394        | 0394        | 0394        | 10685       | 10686       |
| 10   | ROLLER, ECCENTRIC                              | 10619            | 10619       | 10619       | 10621       | 10619       | 10621       | 10621       | 10621       | 10621       | 10623       |
| 11   | COVER FPR ROLLERS                              | 4009             | 4009        | 4009        | 4017        | 4009        | 4017        | 4017        | 4017        | 4017        | 10627       |
| 12   | CARRIER  | 10646            | 10647       | 10648       | 10649       | 10650       | 10651       | 10652       | 10653       | 10654       | 10655       |

\* Please use this order pattern: ORDER NO. + „FIL“, example: 10646FIL

\*\* Please use this order pattern: ORDER NO. + stroke length [mm, 5 digits], example (1 m stroke): 20285-01000

|      |                  | ORDER NO. * |             |             |             |             |             |             |             |             |             |
|------|------------------|-------------|-------------|-------------|-------------|-------------|-------------|-------------|-------------|-------------|-------------|
| ITEM | DESCRIPTION      | PS<br>16/25 | PS<br>25/25 | PS<br>25/35 | PS<br>25/44 | PS<br>32/35 | PS<br>32/44 | PS<br>40/44 | PS<br>40/60 | PS<br>50/60 | PS<br>50/76 |
| 13   | DRIVE BLOCK      | 10642       | 10643       | 10643       | 10643       | 10644       | 10644       | 10644       | 10644       | 10645       | 10645       |
| 14   | WASHER           | 11607       | 11608       | 11608       | 11608       | 11609       | 11609       | 11609       | 11609       | 11609       | 11609       |
| 14   | WASHER STAINLESS | 11607       | 11611       | 11611       | 11611       | 11612       | 11612       | 11612       | 11612       | 11612       | 11612       |
| 15   | SCREW            | 11614       | 11615       | 11615       | 11615       | 11616       | 11616       | 11616       | 11616       | 11616       | 11616       |
| 15   | SCREW STAINLESS  | 11614       | 11615       | 11615       | 11615       | 11616       | 11616       | 11616       | 11616       | 11616       | 11616       |
| 16   | SCRREW           | 2685        | 2685        | 10687       | 10687       | 10687       | 10687       | 10678       | 3256        | 3256        | 3256        |
| 16   | SCREW STAINLESS  | 2689        | 2689        | 10687       | 10687       | 10687       | 10687       | 10679       | 3715        | 3715        | 3715        |

## 3.3.3 Replacement Assemblies

|                     |                           | ORDER NO. * (**) |             |             |             |             |             |             |             |             |             |
|---------------------|---------------------------|------------------|-------------|-------------|-------------|-------------|-------------|-------------|-------------|-------------|-------------|
| ITEM                | DESCRIPTION               | PS<br>16/25      | PS<br>25/25 | PS<br>25/35 | PS<br>25/44 | PS<br>32/35 | PS<br>32/44 | PS<br>40/44 | PS<br>40/60 | PS<br>50/60 | PS<br>50/76 |
| 2,4,5,<br>10,11     | GUIDE UNIT,, STAINLESS ** | 10700            | 10701       | 10702       | 10703       | 10704       | 10705       | 10706       | 10707       | 10708       | 10709       |
| 4,5,6,7,<br>8,10,11 | GUIDE CARRIAGE, COMPLETE  | —                | —           | 11415       | 11416       | 11415       | 11416       | 11416       | 11417       | 11417       | —           |
| 4,5,6,8,<br>10,11   | GUIDE CARRIAGE, COMPLETE  | 11413            | 11414       | —           | —           | —           | —           | —           | —           | —           | 11418       |

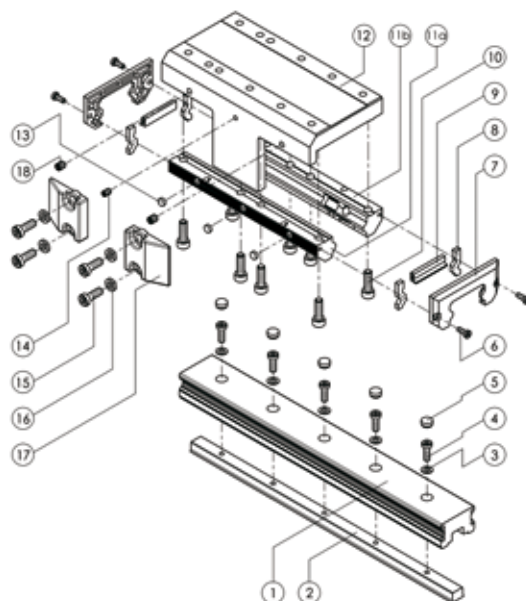
\* Please use this order pattern: ORDER NO. + „FIL“, example: 11413FIL

\*\* Please use this order pattern: ORDER NO. + stroke length [mm, 5 digits], example (1 m stroke): 20175-01000



## 3.4 Proline

(PL16 / PL25 / PL32 / PL40 / PL50)



### 3.4.1 Modules for OSP

|      |  | ORDER NO. ** |       |       |       |       |
|------|--|--------------|-------|-------|-------|-------|
| ITEM | DESCRIPTION                                    | PL 16        | PL 25 | PL 32 | PL 40 | PL 50 |
|      | PROLINE ROLLER GUIDE FOR OSP-P AND OSP-E SCREW | 20855        | 20856 | 20857 | 20858 | 20859 |
|      | PROLINE ROLLER GUIDE FOR OSP-E BELT            | —            | 20874 | 20875 | —     | 20876 |
|      | PROLINE ROLLER GUIDE, STAINLESS                | 20956        | 20934 | 20935 | 20936 | 20937 |

### 3.4.2 Repacement Parts

|      |  | ORDER NO. * (**) |       |       |       |       |
|------|--|------------------|-------|-------|-------|-------|
| ITEM | DESCRIPTION                              | PL 16            | PL 25 | PL 32 | PL 40 | PL 50 |
| 1    | DOUBLE RAIL FOR OSP-P AND OSP-E SCREW ** | 10951            | 10943 | 10944 | 10945 | 10946 |
| 1    | DOUBLE RAIL FOR OSP-E BELT **            | —                | 10868 | 10869 | —     | 10870 |
| 1    | DOUBLE RAIL, STAINLESS **                | 10952            | 10953 | 10954 | 10955 | 10956 |
| 2    | CLAMPING PROFILE **                      | 10957            | 10947 | 10948 | 10949 | 10950 |
| 3    | WASHER                                   | 11884            | 11884 | 11885 | 11885 | 11885 |
| 3    | WASHER, STAINLESS                        | 11947            | 11947 | 11948 | 11948 | 11948 |
| 4    | SCREW                                    | 10810            | 10810 | 10610 | 3275  | 3275  |
| 4    | SCREW, STAINLESS                         | 10811            | 10811 | 10683 | 3717  | 3717  |
| 5    | COVER                                    | 20524            | 20524 | 20526 | 20526 | 20526 |
| 6    | SCREW                                    | 11886            | 11886 | 11886 | 11886 | 11886 |
| 6    | SCREW, STAINLESS                         | 4539             | 4539  | 4539  | 4539  | 4539  |
| 7    | WIPER COVER                              | 11930            | 11841 | 11842 | 11843 | 11844 |
| 8    | FELT                                     | 11931            | 11875 | 11876 | 11877 | 11878 |
| 9    | WIPER                                    | 11932            | 11880 | 11881 | 11882 | 11883 |
| 10   | SCREW                                    | 0619             | 0234  | 1273  | 1323  | 11227 |
| 10   | SCREW, STAINLESS                         | 10166            | 0235  | 0394  | 3714  | 10686 |
| 11   | PAIR OF ROLLER SHOES                     | 11784            | 11785 | 11786 | 11787 | 11788 |
| 11   | PAIR OF ROLLER SHOES, STAINLESS          | 11937            | 11938 | 11939 | 11940 | 11941 |
| 12   | GUIDE CARRIAGE                           | 11702            | 11703 | 11704 | 11705 | 11706 |
| 13   | WASHER                                   | 11929            | 11929 | 11929 | 11929 | 11929 |
| 14   | SET SCREW                                | 0429             | 0429  | 0429  | 0429  | 0429  |
| 15   | SCREW                                    | 11614            | 11615 | 11616 | 11616 | 11616 |

\* Please use this order pattern: ORDER NO. + „FIL“, example: 11930FIL

\*\* Please use this order pattern: ORDER NO. + stroke length [mm, 5 digits], example (1 m stroke): 20855-01000

ORDER NO. \*

| ITEM | DESCRIPTION       | PL 16 | PL 25 | PL 32 | PL 40 | PL 50 |
|------|-------------------|-------|-------|-------|-------|-------|
| 16   | WASHER            | 11607 | 11608 | 11609 | 11609 | 11609 |
| 16   | WASHER, STAINLESS | 11607 | 11611 | 11612 | 11612 | 11612 |
| 17   | DRIVE BLOCK       | 10642 | 10643 | 10644 | 10644 | 10645 |
| 18   | SET SCREW         | 2744  | 2744  | 2744  | 2744  | 2744  |

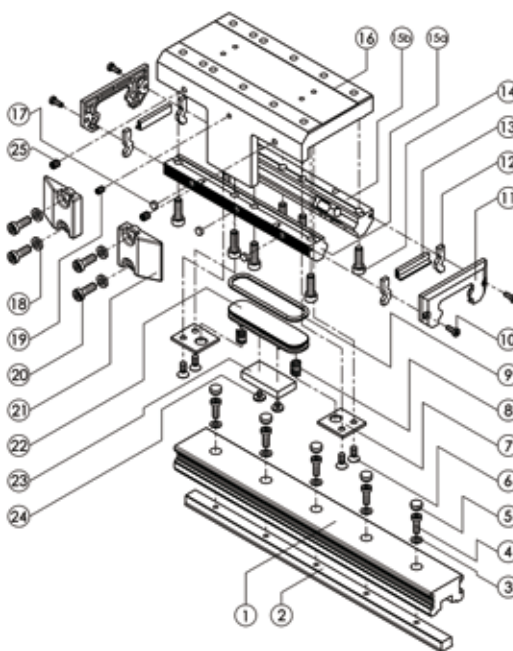
### 3.4.3 Replacement Assemblies

ORDER NO. \*

| ITEM                      | DESCRIPTION                         | PL 16 | PL 25 | PL 32 | PL 40 | PL 50 |
|---------------------------|-------------------------------------|-------|-------|-------|-------|-------|
| 6,7,8,9,10<br>11,12,13,14 | GUIDE CARRIAGE, COMPLETE            | 11985 | 11899 | 11900 | 11901 | 11902 |
| 6,7,8,9,10<br>11,12,13,14 | GUIDE CARRIAGE, COMPLETE, STAINLESS | 11986 | 11950 | 11951 | 11952 | 11953 |

## 3.5 Proline with Brake

(PL25 / PL32 / PL40 / PL50)



### 3.5.1 Modules for OSP

ORDER NO. \*\*

| ITEM | DESCRIPTION                                | PL 25 | PL 32 | PL 40 | PL 50 |
|------|--|-------|-------|-------|-------|
|      | PROLINE ROLLER GUIDE WITH BRAKE            | 20860 | 20861 | 20862 | 20863 |
|      | PROLINE ROLLER GUIDE WITH BRAKE, STAINLESS | 20938 | 20939 | 20940 | 20941 |

\* Please use this order pattern: IDENT-NO. + „FIL“, example: 11607FIL

\* Please use this order pattern: ORDER NO. + „FIL“, example: 11985FIL

\*\* Please use this order pattern: ORDER NO. + stroke length [mm, 5 digits], example (1 m stroke): 20860-01000

## 3.5.2 Replacement Parts

| ITEM | DESCRIPTION                         | ORDER NO. * (**) |       |       |       |
|------|-------------------------------------|------------------|-------|-------|-------|
|      |                                     | PL 25            | PL 32 | PL 40 | PL 50 |
| 1    | DOUBLE RAIL FDK **                  | 10943            | 10944 | 10945 | 10946 |
| 1    | DOUBLE RAIL FDK, STAINLESS **       | 10953            | 10954 | 10955 | 10956 |
| 2    | CLAMPING PROFILE **                 | 10947            | 10948 | 10949 | 10950 |
| 3    | WASHER                              | 11884            | 11885 | 11885 | 11885 |
| 3    | WASHER, STAINLESS                   | 11947            | 11948 | 11948 | 11948 |
| 4    | SCREW                               | 10810            | 10610 | 3275  | 3275  |
| 4    | SCREW, STAINLESS                    | 10811            | 10683 | 3717  | 3717  |
| 5    | COVER                               | 20524            | 20526 | 20526 | 20526 |
| 6    | SCREW                               | 1549             | 1549  | 1549  | 1549  |
| 6    | SCREW, STAINLESS                    | 1549             | 1549  | 1549  | 1549  |
| 7    | PLATE                               | 11207            | 11207 | 11207 | 11207 |
| 8    | SPRING                              | 1121             | 1121  | 1121  | 1128  |
| 8    | SPRING, STAINLESS                   | 4775             | 4775  | 4775  | 11988 |
| 9    | O-RING                              | 11218            | 11219 | 11220 | 11221 |
| 10   | SCREW                               | 11886            | 11886 | 11886 | 11886 |
| 10   | SCREW, STAINLESS                    | 4539             | 4539  | 4539  | 4539  |
| 11   | WIPER COVER                         | 11841            | 11842 | 11843 | 11844 |
| 12   | FELT                                | 11875            | 11876 | 11877 | 11878 |
| 13   | WIPER                               | 11880            | 11881 | 11882 | 11883 |
| 14   | SCREW                               | 0234             | 1273  | 1323  | 11227 |
| 14   | SCREW, STAINLESS                    | 0235             | 0394  | 3714  | 10686 |
| 15   | PAIR OF ROLLER SHOES FEK            | 11785            | 11786 | 11787 | 11788 |
| 15   | PAIR OF ROLLER SHOES FEK, STAINLESS | 11938            | 11939 | 11940 | 11941 |
| 16   | GUIDE CARRIAGE                      | 11731            | 11732 | 11733 | 11734 |
| 17   | WASHER                              | 11929            | 11929 | 11929 | 11929 |
| 18   | WASHER                              | 11608            | 11609 | 11609 | 11609 |
| 18   | WASHER, STAINLESS                   | 11611            | 11612 | 11612 | 11612 |
| 19   | SET SCREW                           | 0439             | 0439  | 0439  | 0439  |
| 20   | SCREW                               | 11615            | 11616 | 11616 | 11616 |
| 21   | DRIVE BLOCK                         | 10643            | 10644 | 10644 | 10645 |
| 22   | BRAKE PISTON                        | 11205            | 11029 | 11212 | 11215 |
| 23   | BRAKE LINING                        | 11206            | 11210 | 11213 | 11216 |
| 24   | SCREW                               | 11217            | 11217 | 11217 | 11217 |
| 24   | SCREW, STAINLESS                    | 11949            | 11949 | 11949 | 11949 |
| 25   | SET SCREW                           | 2744             | 2744  | 2744  | 2744  |

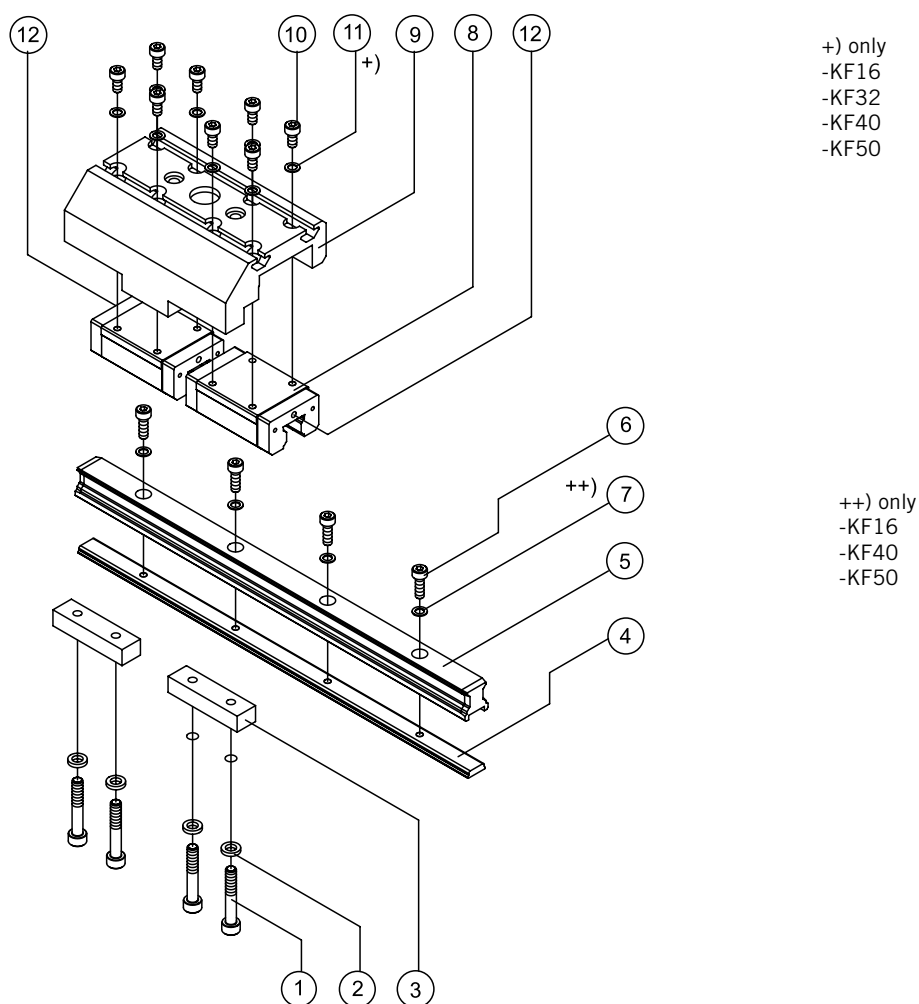
## 3.5.3 Replacement Assemblies

| ITEM                          | DESCRIPTION                         | ORDER NO. * |       |       |       |
|-------------------------------|-------------------------------------|-------------|-------|-------|-------|
|                               |                                     | PL 25       | PL 32 | PL 40 | PL 50 |
| 6,7,8,<br>9,10,11,12,13,14,15 | GUIDE CARRIAGE, COMPLETE            | 11903       | 11904 | 11905 | 11906 |
| 16,17,<br>19,23,24,25         | GUIDE CARRIAGE, COMPLETE, STAINLESS | 11954       | 11955 | 11956 | 11957 |

\* Please use this order pattern: ORDER NO. + „FIL“, example: 11903FIL

\*\* Please use this order pattern: ORDER NO. + stroke length [mm, 5 digits], example (1 m stroke): 10943-01000

### 3.6 Guide OSP-KF



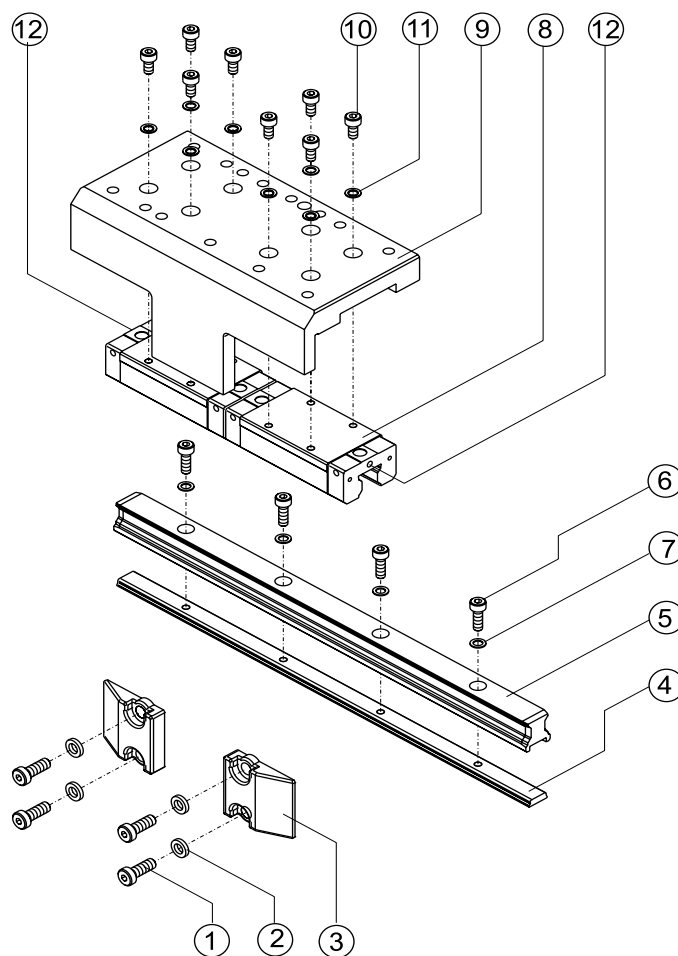
#### 3.6.1 Replacement Parts OSP-KF

| ITEM | DESCRIPTION   | ORDER NO. * (**)   |       |       |       |       |
|------|---|--|-------|-------|-------|-------|
|      |   | Ø 16   | Ø 25  | Ø 32  | Ø 40  | Ø 50  |
| 1    | SCREW   | 13558  | 163   | 858   | 858   | 858   |
| 2    | WASHER  | 11607  | 11608 | 11609 | 11609 | 11609 |
| 3    | DRIVE BLOCK   | 13489  | 13492 | 13493 | 13490 | 13491 |
| 4    | CLAMPING PROFILE **   | 13506  | 13517 | 13518 | 13519 | 13520 |
| 5    | GUIDE RAIL **   | 13511  | 13512 | 13513 | 13514 | 13515 |
| 6    | SCREW   | 10099  | 2685  | 2685  | 234   | 10746 |
| 7    | WAHER   | 3953   | -     | -     | 4373  | 3789  |
| 8    | CARRIER   | 13482  | 13483 | 13483 | 13484 | 13485 |
| 9    | GUIDE CARRIAGE  | 13457  | 13458 | 13459 | 13460 | 13461 |
| 10   | SCREW   | 10099  | 11651 | 3278  | 1062  | 666   |
| 11   | WASHER  | 3953   | -     | 3954  | 4373  | 3789  |
| 12   | GREASE NIPPLE<br>-KF16:<br>-KF25, -KF 32:<br><br>-KF50:<br>-KF40: | FUNNEL-TYPE GREASE NIPPLE SIMILAR TO DIN 3405<br>FUNNEL-TYPE GREASE NIPPLE,<br>FORM A-M3 X 5, DIN 3405<br>GREASE NIPPLE M6 X 8, DIN 71412<br>FUNNEL-TYPE GREASE NIPPLE, FORM B-M3,<br>SIMILAR DIN 3405 |       |       |       |       |

\* Please use this order pattern: ORDER NO. + „FIL“, example: 13489FIL

\*\* Please use this order pattern: ORDER NO. + stroke length [mm, 5 digits], example (1 m stroke): 13506-01000

## 3.7 Starline



### 3.7.1 Modules for OSP

| ORDER NO. * |               |           |           |           |           |           |
|-------------|---------------|-----------|-----------|-----------|-----------|-----------|
| ITEM        | DESCRIPTION   | OSP-STL16 | OSP-STL25 | OSP-STL32 | OSP-STL40 | OSP-STL50 |
|             | GUIDE OSP-STL | 21111     | 21112     | 21113     | 21114     | 21115     |

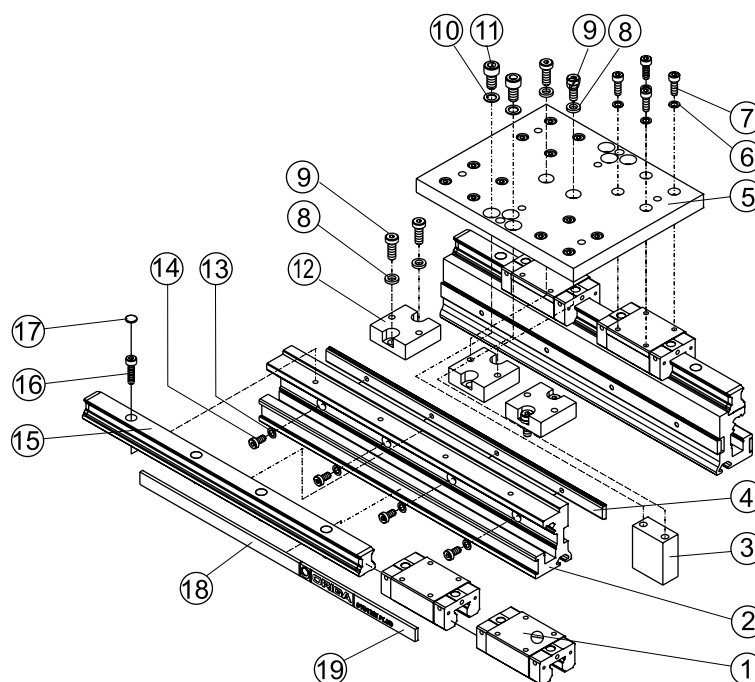
### 3.7.2 Replacement Parts

| ORDER NO. * (**) |                  |           |           |           |           |           |
|------------------|------------------|-----------|-----------|-----------|-----------|-----------|
| ITEM             | DESCRIPTION      | OSP-STL16 | OSP-STL25 | OSP-STL32 | OSP-STL40 | OSP-STL50 |
| 1                | SCREW            | 11614     | 11615     | 11616     | 11616     | 11616     |
| 2                | WASHER           | 11607     | 11608     | 11609     | 11609     | 11609     |
| 3                | DRIVE BLOCK      | 10642     | 10643     | 10644     | 10644     | 10645     |
| 4                | CLAMPING RAIL ** | 13506     | 13517     | 13518     | 13519     | 13520     |
| 5                | GUIDE RAIL **    | 13511     | 13512     | 13513     | 13514     | 13515     |
| 6                | SCREW            | 10099     | 2685      | 2685      | 234       | 10746     |
| 7                | WASHER           | 3953      | -         | -         | 4343      | 3789      |
| 8                | CARRIER          | 13482     | 13584     | 13584     | 13585     | 13586     |
| 9                | GUIDE CARRIAGE   | 13574     | 13575     | 13576     | 13577     | 13578     |
| 10               | SCREW            | 10099     | 3307      | 3278      | 1062      | 1102      |
| 11               | SCREW            | 3953      | 3954      | 3954      | 4373      | 3789      |
| 12               | GREASE NIPPLE    | -         | -         | -         | -         | -         |

\* Please use this order pattern: ORDER NO. + „FIL“, example: 10642FIL

\*\* Please use this order pattern: ORDER NO. + stroke length [mm, 5 digits], example (1 m stroke): 13506-01000

### 3.8 OSP-Heavy Duty



#### 3.8.1 Modules for OSP

| ITEM | DESCRIPTION  | ORDER NO. ** |          |          |          |
|------|--------------|--------------|----------|----------|----------|
|      |              | OSP-HD25     | OSP-HD32 | OSP-HD40 | OSP-HD50 |
|      | GUIDE OSP-HD | 21246        | 21247    | 21248    | 21249    |

#### 3.8.2 Replacement Parts

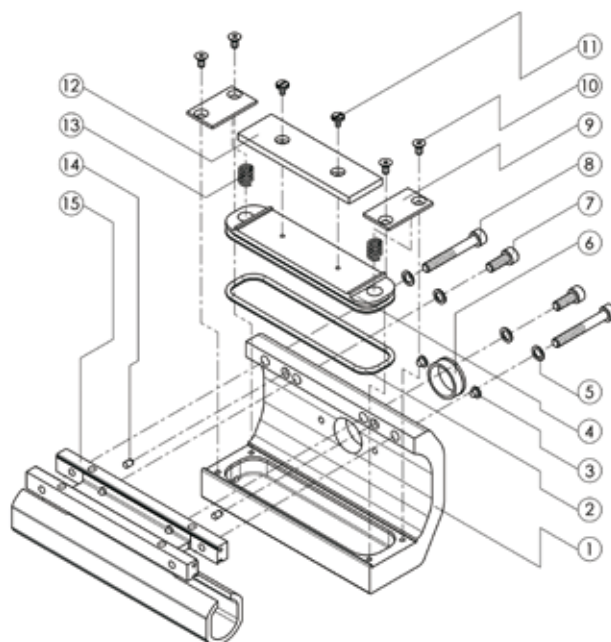
| ITEM | DESCRIPTION                       | ORDER NO. * (**) |          |          |          |
|------|-----------------------------------|------------------|----------|----------|----------|
|      |                                   | OSP-HD25         | OSP-HD32 | OSP-HD40 | OSP-HD50 |
| 1    | CARRIER                           | 13763            | 13763    | 13764    | 13765    |
| 2    | CARRYING RAIL CUT TO STROKE **    | 13715            | 13716    | 13717    | 13718    |
| 3    | MAGNET HOLDER                     | 13755            | 13756    | 13757    | 13758    |
| 4    | CLAMPING PROFILE CUT TO STROKE ** | 13795            | 13796    | 13797    | 13798    |
| 5    | CARRIAGE PLATE                    | 13719            | 13720    | 13721    | 13722    |
| 6    | LOCK WASHER FOR CARRIER           | 3954             | 3954     | 4373     | 3789     |
| 7    | SCREW FOR CARRIER                 | 2685             | 2685     | 10774    | 10610    |
| 8    | LOCK WASHER FOR CARRIER           | 11608            | 11609    | 11609    | 11609    |
| 9    | SCREW FOR CARRIER                 | 11615            | 11618    | 11616    | 11618    |
| 10   | LOCK WASHER FOR MAGNET HOLDER     | 3789             | 3789     | 3789     | 3789     |
| 11   | SCREW FOR MAGNETHOLDER            | 1102             | 1102     | 666      | 666      |
| 12   | CARRIER                           | 10714            | 10715    | 10716    | 10715    |
| 13   | LOCK WASHER FOR CARRYING RAIL3954 | 3954             | 3789     | 3789     | 3789     |
| 14   | SCREW FOR CARRYING RAIL           | 2702             | 2702     | 3275     | 3275     |
| 15   | CARRYING RAIL CUT TO STROKE **    | 13769            | 13770    | 13771    | 13772    |
| 16   | SCREW FOR CARRYING RAIL           | 619              | 619      | 10153    | 12528    |
| 17   | COVER CAP FOR CARRYING RAIL       | 13712            | 13712    | 13713    | 13713    |
| 18   | COVER RAIL -BY THE METER          | 10468            | 10468    | 10468    | 10468    |
| 19   | COVER RAIL FOR TYPE-LABLE **      | 10469            | 10469    | 10469    | 10469    |

\* Please use this order pattern: ORDER NO. + „FIL“, example: 13763FIL

\*\* Please use this order pattern: ORDER NO. + stroke length [mm, 5 digits], example (1 m stroke): 13715-01000

## 3.9 Active Brake

(AB25 / AB32 / AB40 / AB50 / AB63 / AB80)



### 3.9.1 Modules for OSP

|      |              | ORDER NO. * |       |       |       |       |       |
|------|--------------|-------------|-------|-------|-------|-------|-------|
| ITEM | DESCRIPTION  | AB 25       | AB 32 | AB 40 | AB 50 | AB 63 | AB 80 |
|      | ACTIVE BRAKE | 20806       | 20807 | 20808 | 20809 | 20810 | 20811 |

### 3.9.2 Replacement Parts

|        |                                | ORDER NO. * |       |       |       |       |       |
|--------|--------------------------------|-------------|-------|-------|-------|-------|-------|
| ITEM   | DESCRIPTION                    | AB 25       | AB 32 | AB 40 | AB 50 | AB 63 | AB 80 |
| 1      | BRAKE HOUSING                  | 11462       | 11485 | 11464 | 11487 | 11583 | 11584 |
| 2      | O-RING                         | 11643       | 11565 | 11645 | 11646 | 11647 | 11648 |
| 3      | PLUG                           | 10674       | 10674 | 10674 | 10674 | 10674 | 10674 |
| 4      | BRAKE PISTON                   | —           | —     | 11466 | 11632 | 11633 | 11634 |
| 4 + 12 | BRAKE PISTON WITH BRAKE LINING | 11649       | 11650 | —     | —     | —     | —     |
| 5      | WASHER                         | 4396        | 3792  | 3792  | 3792  | 4397  | 4398  |
| 6      | PLUG                           | 11933       | 11933 | 11933 | 11934 | 11934 | 11934 |
| 7      | SCREW                          | 3716        | 667   | 667   | 394   | 10686 | 11653 |
| 8      | SCREW                          | 11640       | 11641 | 11641 | 11642 | —     | —     |
| 9      | PRESSURE PLATE                 | 11635       | 11635 | 11636 | 11637 | 11638 | 11638 |
| 10     | SCREW                          | 11651       | 11651 | 11651 | 11651 | 11652 | 11652 |
| 11     | SCREW                          | —           | —     | 11596 | 11596 | 11596 | 11596 |
| 12     | BRAKE LINING                   | —           | —     | 11460 | 11483 | 11585 | 11586 |
| 13     | SPRING                         | 11728       | 11728 | 11728 | 11729 | 11730 | 11730 |
| 14     | LOCATING PIN                   | —           | —     | 2242  | 2242  | —     | —     |
| 15     | PISTON YOKE                    | 11625       | 11626 | 11627 | 11628 | 11629 | 11630 |

\* Please use this order pattern: ORDER NO. + „FIL“, example: 20806FIL



### 3.9.3 Service Kits

| ITEM   | DESCRIPTION                         | ORDER NO. * |       |       |       |       |       |
|--------|-------------------------------------|-------------|-------|-------|-------|-------|-------|
|        |                                     | AB 25       | AB 32 | AB 40 | AB 50 | AB 63 | AB 80 |
| 2,4,12 | SERVICE KIT (INC.GREASE, 8ML TUBE)  | 11822       | 11823 | —     | —     | —     | —     |
| 2,12   | SERVICE KIT (INC.GREASE, 8ML TUBE)) | —           | —     | 11824 | 11825 | 11826 | 11827 |

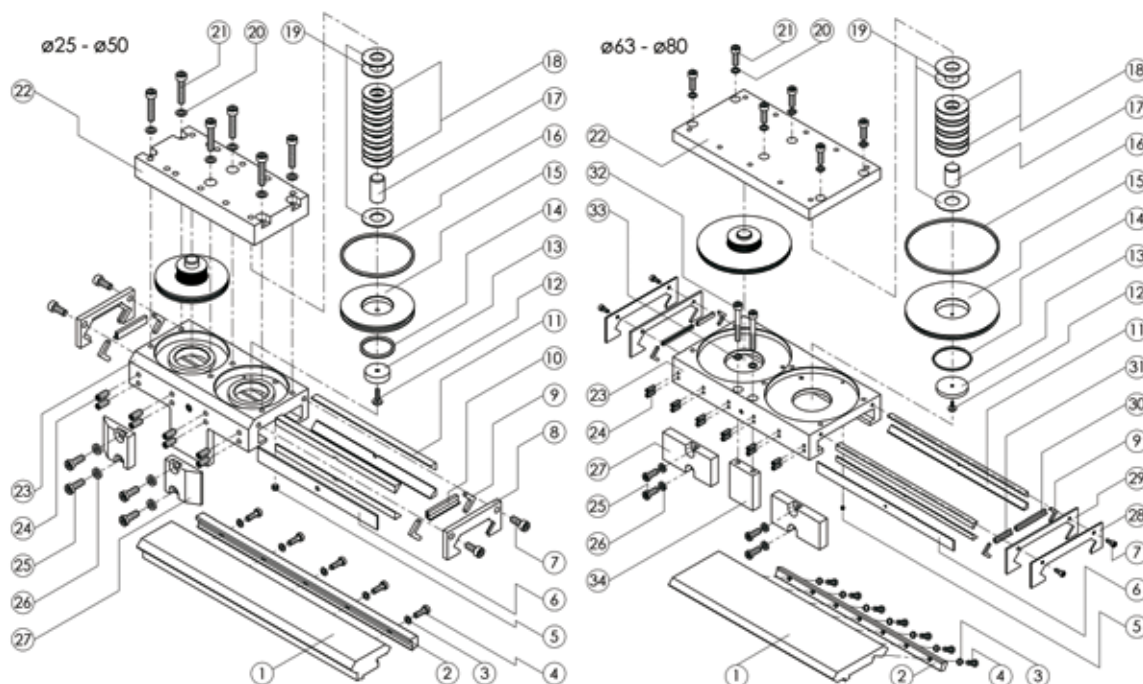
### 3.9.4 Lubrication

| ITEM | DESCRIPTION      | ORDER NO. * |       |       |       |       |       |
|------|------------------|-------------|-------|-------|-------|-------|-------|
|      |                  | AB 25       | AB 32 | AB 40 | AB 50 | AB 63 | AB 80 |
|      | GREASE, 8ML TUBE | 1598        | 1598  | 1598  | 1598  | 1598  | 1598  |

\* Please use this order pattern: ORDER NO. + „FIL“, example: 11822FIL

## 3.10 Multi-Brake-Slideline

(MB-SL25 / MB-SL32 / MB-SL40 / MB-SL50 / MB-SL63 / MB-SL80)



### 3.10.1 Modules for OSP

| ITEM | DESCRIPTION                                    | ORDER NO. ** |         |         |         |         |         |
|------|--|--------------|---------|---------|---------|---------|---------|
|      |  | MB-SL25      | MB-SL32 | MB-SL40 | MB-SL50 | MB-SL63 | MB-SL80 |
|      | MULTI-BRAKE WITH SLIDELINE PLAIN BEARING GUIDE | 20796        | 20797   | 20798   | 20799   | 20800   | 20846   |

### 3.10.2 Replacement Parts

| ITEM | DESCRIPTION      | ORDER NO. * (**) |         |         |         |         |         |
|------|------------------|------------------|---------|---------|---------|---------|---------|
|      |                  | MB-SL25          | MB-SL32 | MB-SL40 | MB-SL50 | MB-SL63 | MB-SL80 |
| 1    | GUIDE RAIL **    | 10913            | 10914   | 10915   | 10916   | 10939   | 10941   |
| 2    | CLAMPING RAIL ** | 10918            | 10919   | 10920   | 10921   | 10940   | 10942   |
| 3    | WASHER           | 4395             | 4395    | 3792    | 3792    | 3792    | 3792    |
| 4    | SCREW            | 10811            | 10811   | 10683   | 10683   | 10683   | 10683   |
| 5    | SET SCREW        | 11301            | 11301   | 11301   | 11301   | 11301   | 11301   |
| 6    | SUPPORT STRIP    | 10571            | 10590   | 10570   | 10798   | 11547   | 11547   |
| 7    | SCREW            | 3716             | 3716    | 1063    | 3716    | 3716    | 3716    |
| 8    | WIPER COVER      | 1661             | 1681    | 10487   | 10504   | —       | —       |
| 9    | FELT             | 1619             | 1665    | 10665   | 10665   | 11543   | 11543   |
| 10   | WIPER            | 1663             | 1683    | 10471   | 10472   | —       | —       |
| 11   | SLIDE PROFILE    | 10177            | 10591   | 10569   | 10797   | 11546   | 11546   |
| 12   | SCREW            | 11548            | 11548   | 11548   | 11549   | 11549   | 11549   |
| 13   | BRAKE LINING     | 11515            | 11516   | 11517   | 11518   | 11519   | 11519   |
| 14   | O-RING           | 2526             | 11559   | 11560   | 11561   | 11562   | 11562   |
| 15   | BRAKE PISTON     | 11510            | 11511   | 11512   | 11513   | 11514   | 11514   |
| 16   | O-RING           | 11563            | 11564   | 11565   | 11566   | 11567   | 11567   |
| 17   | GUIDE PIN        | 11520            | 11521   | 11522   | 11523   | 11524   | 11524   |

\* Please use this order pattern: ORDER NO. + „FIL“, example: 20796FIL

\*\* Please use this order pattern: ORDER NO. + stroke length [mm, 5 digits], example (1 m stroke): 11515-01000

|      |                       | ORDER NO. * |         |         |         |         |         |
|------|-----------------------|-------------|---------|---------|---------|---------|---------|
| ITEM | DESCRIPTION           | MB-SL25     | MB-SL32 | MB-SL40 | MB-SL50 | MB-SL63 | MB-SL80 |
| 18   | SAUCER SPRING         | 11533       | 11534   | 11535   | 11536   | 11537   | 11537   |
| 19   | PRESSURE PLATE 0,5 MM | 11525       | 11525   | 11527   | 11529   | 11531   | 11531   |
| 19   | PRESSURE PLATE 1,0 MM | 11526       | 11526   | 11528   | 11530   | 11532   | 11532   |
| 20   | WASHER                | 4396        | 3792    | 3792    | 3792    | 4397    | 4397    |
| 21   | SCREW                 | 4607        | 3714    | 3714    | 3714    | 10686   | 10686   |
| 22   | PLATE                 | 11505       | 11506   | 11507   | 11508   | 11509   | 11509   |
| 23   | GUIDE CARRIAGE        | 11500       | 11501   | 11502   | 11503   | 11504   | 11504   |
| 24   | SET SCREW             | 10682       | 10682   | 2255    | 11919   | 11550   | 11550   |
| 25   | SCREW                 | 11615       | 11616   | 11616   | 11616   | 11617   | 11257   |
| 26   | WASHER                | 11611       | 11612   | 11612   | 11612   | 11613   | 11831   |
| 27   | DRIVE BLOCK           | 10643       | 10644   | 10644   | 10645   | 11541   | 11828   |
| 28   | WIPER COVER, OUTER    | —           | —       | —       | —       | 11545   | 11545   |
| 29   | WIPER COVER, INNER    | —           | —       | —       | —       | 11544   | 11544   |
| 30   | WIPER                 | —           | —       | —       | —       | 1663    | 1663    |
| 31   | WIPER                 | —           | —       | —       | —       | 10471   | 10471   |
| 32   | SCREW                 | —           | —       | —       | —       | 1229    | 1229    |
| 33   | WASHER                | —           | —       | —       | —       | 4397    | 4397    |
| 34   | CARRIER               | —           | —       | —       | —       | 11542   | 11829   |

### 3.10.3 Replacement Assemblies

|  |  | ORDER NO. * |         |         |         |         |         |
|--|--|-------------|---------|---------|---------|---------|---------|
| ITEM   | DESCRIPTION                                  | MB-SL25     | MB-SL32 | MB-SL40 | MB-SL50 | MB-SL63 | MB-SL80 |
| 5,6,7,8, 9,10,11,12,13,14,15,16,17,18,19,20,21 22, 23,24 | GUIDE CARRIAGE, COMPLETE                     | 11684       | 11685   | 11686   | 11687   | —       | —       |
| 5,6,7,9, 11,12,13,14,15,16,17,18,19,20,21,22.23.24       | GUIDE CARRIAGE, COMPLETE                     | —           | —       | —       | —       | 11688   | 11688   |
| 9,10,11, 13, 14,16                                       | SERVICE KIT<br>(INC. GUIDE GREASE, 8ML TUBE) | 11089       | 11090   | 11091   | 11092   | —       | —       |
| 9,11,13, 14,16,30,31                                     | SERVICE KIT<br>(INC. GUIDE GREASE, 8ML TUBE) | —           | —       | —       | —       | 11093   | 11093   |

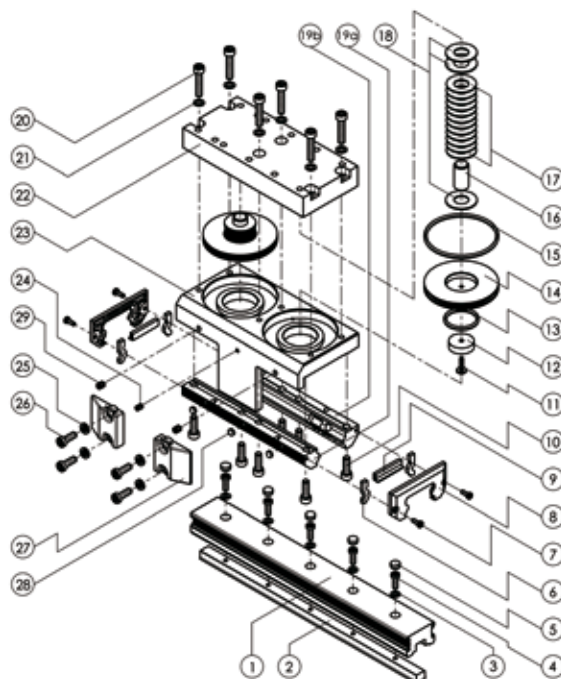
### 3.10.4 Lubrication

|      |                         | ORDER NO. * |  |  |  |  |  |
|------|-------------------------|-------------|--|--|--|--|--|
| ITEM | DESCRIPTION             |             |  |  |  |  |  |
|      | GUIDE GREASE, 8 ML TUBE | 10550       |  |  |  |  |  |
|      | GUIDE GREASE, 0.5 KG    | 11606       |  |  |  |  |  |

\* Please use this order pattern: ORDER NO. + „FIL“, example: 11533FIL

## 3.11 Multi-Brake-Proline

(MB-PL25 / MB-PL32 / MB-PL40 / MB-PL50)



### 3.11.1 Modules for OSP

| ITEM | DESCRIPTION                                      | ORDER NO. ** |         |         |         |
|------|--|--------------|---------|---------|---------|
|      |  | MB-PL25      | MB-PL32 | MB-PL40 | MB-PL50 |
|      | MULTI-BRAKE WITH PROLINE ROLLER GUIDE            | 20864        | 20865   | 20866   | 20867   |
|      | MULTI-BRAKE WITH PROLINE ROLLER GUIDE, STAINLESS | 20942        | 20943   | 20944   | 20945   |

### 3.11.2 Replacement Parts

| ITEM | DESCRIPTION                   | ORDER NO. * (**) |         |         |         |
|------|-------------------------------|------------------|---------|---------|---------|
|      |                               | MB-PL25          | MB-PL32 | MB-PL40 | MB-PL50 |
| 1    | DOUBLE RAIL FDK **            | 10943            | 10944   | 10945   | 10946   |
| 1    | DOUBLE RAIL FDK, STAINLESS ** | 10953            | 10954   | 10955   | 10956   |
| 2    | CLAMPING PROFILE **           | 10947            | 10948   | 10949   | 10950   |
| 3    | WASHER                        | 11884            | 11885   | 11885   | 11885   |
| 3    | WASHER, STAINLESS             | 11947            | 11948   | 11948   | 11948   |
| 4    | SCREW                         | 10810            | 10610   | 3275    | 3275    |
| 4    | SCREW, STAINLESS              | 10811            | 10683   | 3717    | 3717    |
| 5    | COVER                         | 20524            | 20526   | 20526   | 20526   |
| 6    | FELT                          | 11875            | 11876   | 11877   | 11878   |
| 7    | SCREW                         | 11886            | 11886   | 11886   | 11886   |
| 7    | SCREW, STAINLESS              | 4539             | 4539    | 4539    | 4539    |
| 8    | WIPER COVER                   | 11841            | 11842   | 11843   | 11844   |
| 9    | WIPER                         | 11880            | 11881   | 11882   | 11883   |
| 10   | SCREW                         | 0234             | 1273    | 1323    | 11227   |
| 10   | SCREW, STAINLESS              | 0235             | 0394    | 3714    | 10686   |
| 11   | SCREW                         | 11548            | 11548   | 11548   | 11549   |
| 12   | BRAKE LINING                  | 11515            | 11516   | 11517   | 11518   |
| 13   | O-RING                        | 2526             | 11559   | 11560   | 11561   |

\* Please use this order pattern: ORDER NR. + „FIL“, example: 11880FIL

\*\* Please use this order pattern: ORDER NR. + stroke length [mm, 5 digits], example: (1 m stroke): 10943-01000

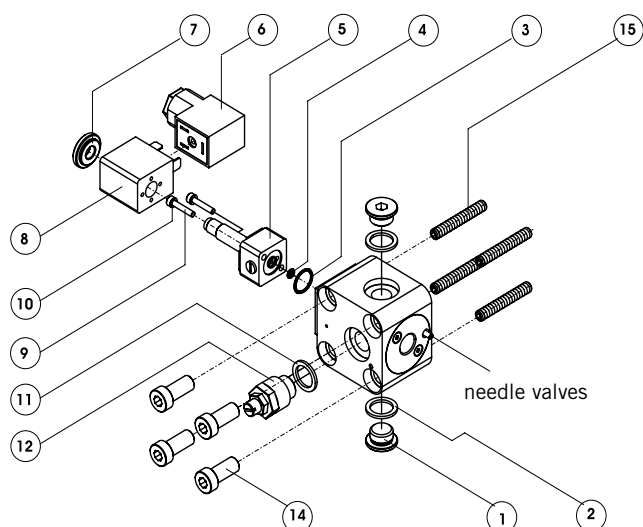
|      |                                     | ORDER NO. * |             |             |             |
|------|-------------------------------------|-------------|-------------|-------------|-------------|
| ITEM | DESCRIPTION                         | MB-<br>PL25 | MB-<br>PL32 | MB-<br>PL40 | MB-<br>PL50 |
| 14   | BRAKE PISTON                        | 11510       | 11511       | 11779       | 11780       |
| 15   | O-RING                              | 11563       | 11564       | 11565       | 11887       |
| 16   | GUIDE PIN                           | 11520       | 11521       | 11522       | 11523       |
| 17   | SAUCER SPRING                       | 11533       | 11534       | 11535       | 11536       |
| 18   | PRESSURE PLATE 0.5 MM               | 11525       | 11526       | 11527       | 11529       |
| 18   | PRESSURE PLATE 1,0 MM               | 11526       | 11526       | 11528       | 11530       |
| 19   | PAIR OF ROLLER SHOES FEK            | 11785       | 11786       | 11787       | 11788       |
| 19   | PAIR OF ROLLER SHOES FEK, STAINLESS | 11938       | 11939       | 11940       | 11941       |
| 20   | SCREW                               | 1848        | 1323        | 1323        | 1323        |
| 20   | SCREW, STAINLESS                    | 4607        | 3714        | 3714        | 3714        |
| 21   | WASHER                              | 4373        | 3789        | 3789        | 3789        |
| 21   | WASHER, STAINLESS                   | 4396        | 3792        | 3792        | 3792        |
| 22   | PLATE                               | 11505       | 11506       | 11507       | 11508       |
| 23   | GUIDE CARRIAGE                      | 11912       | 11913       | 11914       | 11915       |
| 24   | SET SCREW                           | 0429        | 0429        | 0429        | 0429        |
| 25   | WASHER                              | 11608       | 11609       | 11609       | 11609       |
| 25   | WASHER, STAINLESS                   | 11611       | 11612       | 11612       | 11612       |
| 26   | SCREW                               | 11615       | 11616       | 11616       | 11616       |
| 27   | DRIVE BLOCK                         | 10643       | 10644       | 10644       | 10645       |
| 28   | WASHER                              | 11929       | 11929       | 11929       | 11929       |
| 29   | SET SCREW                           | 2744        | 2744        | 2744        | 2744        |

### 3.11.3 Replacement Assemblies

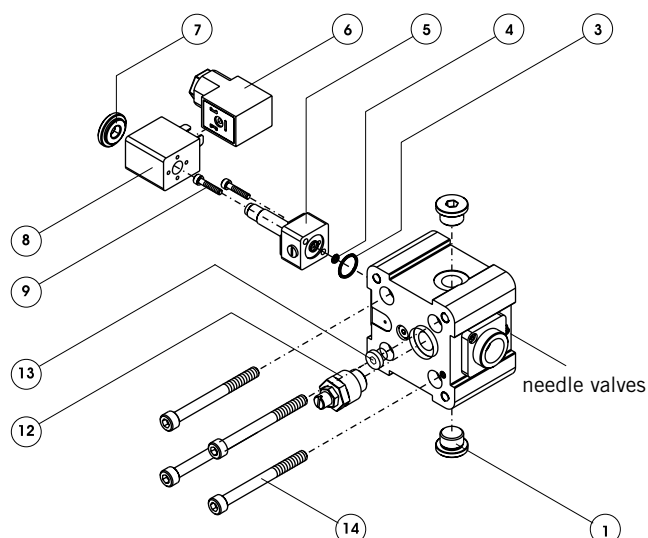
|   |                                     | ORDER NO. * |             |             |             |
|---|-------------------------------------|-------------|-------------|-------------|-------------|
| ITEM  | DESCRIPTION                         | MB-<br>PL25 | MB-<br>PL32 | MB-<br>PL40 | MB-<br>PL50 |
| 6,7,8,9,10,11,<br>12,13,14,15,16,17,18,19,20,21,22,23,24,28 | GUIDE CARRIAGE, COMPLETE            | 11907       | 11908       | 11909       | 11910       |
| 6,7,8,9,10,11,<br>12,13,14,15,16,17,18,19,20,21,22,23,24,28 | GUIDE CARRIAGE, COMPLETE, STAINLESS | 11958       | 11959       | 11960       | 11961       |

\* Please use this order pattern: ORDER NO. + „FIL“, example: 11510FIL

## 3.12 Integrated 3/2 Way Valves VOE



OSP-P25 / OSP-P32



OSP-P40 / OSP-P50

### 3.12.1 Modules for OSP

| ITEM | DESCRIPTION                                 | ORDER NO. * |         |         |         |
|------|---|-------------|---------|---------|---------|
|      |   | OSP-P25     | OSP-P32 | OSP-P40 | OSP-P50 |
|      | INTEGRATED 3/2 WAY VALVE VOE 24V, COMPLETE  | 20914       | 20916   | 20918   | 20920   |
|      | INTEGRATED 3/2 WAY VALVE VOE 220V, COMPLETE | 20915       | 20917   | 20919   | 20921   |

### 3.12.2 Replacement Parts

| ITEM | DESCRIPTION                                    | ORDER NO. |         |         |         |
|------|--|-----------|---------|---------|---------|
|      |  | OSP-P25   | OSP-P32 | OSP-P40 | OSP-P50 |
| 1    | SCREW PLUG                                     | KW0426    | 0099*   | KW0427  | KW0427  |
| 2    | SEAL RING                                      | —         | KW0355  | —       | —       |
| 3    | O-RING   | 0631*     | 0631*   | 0631*   | 0631*   |
| 4    | O-RING   | 0628*     | 0628*   | 0628*   | 0628*   |
| 5    | PILOT VALVE                                    | 11890*    | 11890*  | 11890*  | 11890*  |
| 6    | PLUG 10-50 V                                   | 11894*    | 11894*  | 11894*  | 11894*  |
| 6    | PLUG 70-250 V                                  | 11895*    | 11895*  | 11895*  | 11895*  |
| 7    | KNURLED NUT                                    | 0651*     | 0651*   | 0651*   | 0651*   |
|      | SPRING WASHER                                  | 0652*     | 0652*   | 0652*   | 0652*   |
| 8    | SOLENOID COIL FOR 24 V= AND 60 V~ / 50-60 HZ   | KZ3673    | KZ3673  | KZ3673  | KZ3673  |
| 8    | SOLENOID COIL FOR 110 V= AND 220 V~ / 50-60 HZ | KZ3672    | KZ3672  | KZ3672  | KZ3672  |
| 9    | SCREW FOR PILOT VALVE                          | 10107*    | 10107*  | 10107*  | 10107*  |
| 10   | LOCK WASHER SCHNORR                            | —         | 3953*   | —       | —       |
| 11   | SEAL RING                                      | —         | KW0355  | —       | —       |
| 12   | SCREW-IN THROTTLE                              | KY6952    | KY6953  | KY6953  | KY6953  |
| 13   | SCREW PLUG                                     | —         | —       | KW0425  | KW0425  |
| 14   | END CAP SCREW                                  | 1621*     | 1006*   | 1521*   | 1521*   |

\* Please use this order pattern: ORDER-NO. + „FIL“, example: 20914FIL

### 3.12.3 Replacement Assemblies

| ITEM                              | DESCRIPTION   | ORDER NO. * |         |         |         |
|-----------------------------------|---|-------------|---------|---------|---------|
|                                   |   | OSP-P25     | OSP-P32 | OSP-P40 | OSP-P50 |
| COMPLETE, BUT WITHOUT 6,7,8,14,15 | INTEGRATED 3/2 WAY VALVE VOE (WITHOUT PLUG, KNURLED NUT, SOLENOID AND END CAP SCREWS) | 11840       | 11866   | 11855   | 11857   |

### 3.12.4 Lubrication

| ITEM | DESCRIPTION       | ORDER NO. * |         |         |         |
|------|-------------------|-------------|---------|---------|---------|
|      |                   | OSP-P25     | OSP-P32 | OSP-P40 | OSP-P50 |
|      | GREASE, 8 ML TUBE | 1598        | 1598    | 1598    | 1598    |

\* Please use this order pattern: ORDER NO. + „FIL“, example: 11840FIL



### Notizen

# Parker Worldwide

## Europe, Middle East, Africa

**AE – United Arab Emirates,**  
Dubai

Tel: +971 4 8127100  
parker.me@parker.com

**AT – Austria,** Wiener Neustadt  
Tel: +43 (0)2622 23501-0  
parker.austria@parker.com

**AT – Eastern Europe,** Wiener  
Neustadt  
Tel: +43 (0)2622 23501 900  
parker.easteurope@parker.com

**AZ – Azerbaijan,** Baku  
Tel: +994 50 2233 458  
parker.azerbaijan@parker.com

**BE/LU – Belgium,** Nivelles  
Tel: +32 (0)67 280 900  
parker.belgium@parker.com

**BY – Belarus,** Minsk  
Tel: +375 17 209 9399  
parker.belarus@parker.com

**CH – Switzerland,** Etoy  
Tel: +41 (0)21 821 87 00  
parker.switzerland@parker.com

**CZ – Czech Republic,** Klecany  
Tel: +420 284 083 111  
parker.czechrepublic@parker.com

**DE – Germany,** Kaarst  
Tel: +49 (0)2131 4016 0  
parker.germany@parker.com

**DK – Denmark,** Ballerup  
Tel: +45 43 56 04 00  
parker.denmark@parker.com

**ES – Spain,** Madrid  
Tel: +34 902 330 001  
parker.spain@parker.com

**FI – Finland,** Vantaa  
Tel: +358 (0)20 753 2500  
parker.finland@parker.com

**FR – France,** Contamine s/Arve  
Tel: +33 (0)4 50 25 80 25  
parker.france@parker.com

**GR – Greece,** Athens  
Tel: +30 210 933 6450  
parker.greece@parker.com

**HU – Hungary,** Budapest  
Tel: +36 1 220 4155  
parker.hungary@parker.com

**IE – Ireland,** Dublin  
Tel: +353 (0)1 466 6370  
parker.ireland@parker.com

**IT – Italy,** Corsico (MI)  
Tel: +39 02 45 19 21  
parker.italy@parker.com

**KZ – Kazakhstan,** Almaty  
Tel: +7 7272 505 800  
parker.easteurope@parker.com

**NL – The Netherlands,** Oldenzaal  
Tel: +31 (0)541 585 000  
parker.nl@parker.com

**NO – Norway,** Asker  
Tel: +47 66 75 34 00  
parker.norway@parker.com

**PL – Poland,** Warsaw  
Tel: +48 (0)22 573 24 00  
parker.poland@parker.com

**PT – Portugal,** Leca da Palmeira  
Tel: +351 22 999 7360  
parker.portugal@parker.com

**RO – Romania,** Bucharest  
Tel: +40 21 252 1382  
parker.romania@parker.com

**RU – Russia,** Moscow  
Tel: +7 495 645-2156  
parker.russia@parker.com

**SE – Sweden,** Spånga  
Tel: +46 (0)8 59 79 50 00  
parker.sweden@parker.com

**SK – Slovakia,** Banská Bystrica  
Tel: +421 484 162 252  
parker.slovakia@parker.com

**SL – Slovenia,** Novo Mesto  
Tel: +386 7 337 6650  
parker.slovenia@parker.com

**TR – Turkey,** Istanbul  
Tel: +90 216 4997081  
parker.turkey@parker.com

**UA – Ukraine,** Kiev  
Tel: +380 44 494 2731  
parker.ukraine@parker.com

**UK – United Kingdom,** Warwick  
Tel: +44 (0)1926 317 878  
parker.uk@parker.com

**ZA – South Africa,** Kempton Park  
Tel: +27 (0)11 961 0700  
parker.southafrica@parker.com

## North America

**CA – Canada,** Milton, Ontario  
Tel: +1 905 693 3000

**US – USA,** Cleveland  
Tel: +1 216 896 3000

## Asia Pacific

**AU – Australia,** Castle Hill  
Tel: +61 (0)2-9634 7777

**CN – China,** Shanghai  
Tel: +86 21 2899 5000

**HK – Hong Kong**  
Tel: +852 2428 8008

**IN – India,** Mumbai  
Tel: +91 22 6513 7081-85

**JP – Japan,** Tokyo  
Tel: +81 (0)3 6408 3901

**KR – South Korea,** Seoul  
Tel: +82 2 559 0400

**MY – Malaysia,** Shah Alam  
Tel: +60 3 7849 0800

**NZ – New Zealand,** Mt Wellington  
Tel: +64 9 574 1744

**SG – Singapore**  
Tel: +65 6887 6300

**TH – Thailand,** Bangkok  
Tel: +662 717 8140

**TW – Taiwan,** Taipei  
Tel: +886 2 2298 8987

## South America

**AR – Argentina,** Buenos Aires  
Tel: +54 3327 44 4129

**BR – Brazil,** Sao Jose dos Campos  
Tel: +55 12 4009 3500

**CL – Chile,** Santiago  
Tel: +56 2 623 1216

**MX – Mexico,** Apodaca  
Tel: +52 81 8156 6000

**VE – Venezuela,** Caracas  
Tel: +58 212 238 5422

## Parker Hannifin Manufacturing Germany GmbH & Co. KG Pneumatic Division Europe – Origa

Industriestraße 8  
70794 Filderstadt, Germany  
Tel: +49 (0)7158 1703-0  
Fax: +49 (0)7158 64870  
E-Mail: info-origa-de@parker.com  
www.parker-origa.com  
www.parker.com

